



Certificate of Conformity

The products


EUT : **Audio Distribution System**
Trade Name : **RTI**
Model No. : **AD-8**

which produced by

Remote Technologies Inc.
5775 12th Ave. East, Suite 180, Shakopee, MN 55379, U.S.A.

Has been tested by Electronics Testing Center, Taiwan ETC
And was found to comply with the EMC requirements on the basis of

EN 55013:2001/A1:2003/A2:2006
EN 61000-3-2:2006/A1:2009/A2:2009
EN 61000-3-3:2008
AS/NZS CISPR 13:2004


Signature
Will Yao
Manager of EMC Testing Department II
Electronics Testing Center, Taiwan



Report Number : 11-04-RBF-173-01

Date of Issue: Jul. 22, 2011

- Note:**
1. The results of the Test Report relate only to the items tested.
 2. The Test Report shall not be reproduced except in full, without the written approval of ETC.
 3. Together with the applicant's own documented production control, the applicant (or his European authorized representative) could draw up an EC Declaration of Conformity and affix the CE marking.
 4. EC Declaration of Conformity is the responsibility of the manufacturer/ importer.

ELECTRONICS TESTING CENTER, TAIWAN
NO. 34, LIN 5, DINGFU, LINKOU DIST.,
NEW TAIPEI COUNTY, TAIWAN, 24442,
R.O.C.

TEL:(02)26023052
INT:+886-2-26023052
FAX:(02)26010910
INT:+886-2-26010910



TEST REPORT

Responsible Party : ***Remote Technologies Inc.***
Manufacturer : ***Amcli International Corp.***
Description of Product : ***Audio Distribution System***
Trade Name : ***RTI***
Model No. : ***AD-8***
Test Report File No. : ***11-04-RBF-173-01***
Date Test Item Received : ***Apr. 26, 2011***
Date Test Campaign : ***Jul. 21, 2011***
Completed
Date of Issue : ***Jul. 22, 2011***

Test Performed by

ELECTRONICS TESTING CENTER, TAIWAN

NO. 34. LIN 5. DINGFU, LINKOU DIST.,
NEW TAIPEI COUNTY, TAIWAN, 24442, R.O.C.
TEL : (02)26023052 FAX: (02)26010910
<http://www.etc.org.tw> ; e-mail : emc@etc.org.tw

This test report consists of 65 Pages. This test report is the property of ETC, and shall not be reproduced except in full, without the written consent of ETC. ETC hereby returns all rights-in-data to [***Remote Technologies Inc.***] for their exclusive legal use.

Note : 1. The results of the Test Report relate only to the items tested.
2. The Test Report shall not be reproduced except in full, without the written approval of ETC.

CONTENTS

| | |
|---|----|
| ● EMC TEST REPORT | 1 |
| ● CONTENTS | 2 |
| 1. TEST REPORT CERTIFICATION | 3 |
| 2. GENERAL INFORMATIONS | 5 |
| 2.1 Description of EUT:..... | 5 |
| 2.2 Related Information of EUT: | 5 |
| 2.3 Tested Configuration: | 5 |
| 2.4 Deviation Record: | 5 |
| 2.5 Modification Record:..... | 5 |
| 3. SUMMARY OF TEST RESULTS..... | 6 |
| 3.1 Emissions:..... | 6 |
| 3.1.1 Conducted Emissions..... | 6 |
| 3.1.2 Radiated Emissions (Absorbing Clamp)Test Data | 7 |
| 3.1.4 Harmonics Current Emissions | 8 |
| 3.1.5 Voltage Fluctuations and Flicker | 8 |
| 4. TEST DATA & RELATED INFORMATIONS | 9 |
| 4.1 Emissions:..... | 9 |
| 4.1.1 Conducted Emissions Test : | 9 |
| 4.1.1.1 Conducted Emissions Test Data: | 9 |
| 4.1.1.2 Conducted Emissions Test Setup Photos : | 33 |
| 4.1.2 Radiated Emission Data(Absorbing Clamp) | 34 |
| 4.1.2.1 Radiated Emissions (Absorbing Clamp) Test Date: | 34 |
| 4.1.2.2 Radiated Emissions (Absorbing Clamp) Test Setup Photos :..... | 60 |
| 4.1.3 Harmonics Current Emissions Test..... | 61 |
| 4.1.3.1 Harmonics Current Emissions Test Data | 61 |
| 4.1.3.2 Harmonics Current Emissions Test Setup Photos..... | 63 |
| 4.1.4 Voltage Fluctuations and Flicker Test..... | 64 |
| 4.1.4.1 Voltage Fluctuations and Flicker Test Data | 64 |
| 4.1.4.2 Voltage Fluctuations and Flicker Test Setup Photos..... | 65 |

1. TEST REPORT CERTIFICATION

Client : Remote Technologies Inc.
Address : 5775 12th Ave. East, Suite 180, Shakopee, MN 55379, U.S.A.
Manufacturer : Amcli International Corp.
Address : (1) 5Fl., No. 8, Alley 11, Lane 327, Sec 2, Chung San Rd., Chung Ho Dist., New Taipei City, Taiwan. ROC
(2) 2Fl., No. 14. Lane 327, Sec 2, Chung San Rd., Chung Ho Dist., New Taipei City, Taiwan. ROC
EUT : Audio Distribution System
Trade name : RTI
Model No. : AD-8
Test specifications :
Emissions : EN 55013:2001/A1:2003/A2:2006
EN 61000-3-2:2006/A1:2009/A2:2009
EN 61000-3-3:2008
Regulations applied :
Emissions : EN 55013:2001/A1:2003/A2:2006
EN 61000-3-2:2006/A1:2009/A2:2009
EN 61000-3-3:2008
AS/NZS CISPR 13:2004

The testing described in this report has been carried out to the best of our knowledge and ability, and our responsibility is limited to the exercise of reasonable care. This certification is not intended to relieve the sellers from their legal and/or contractual obligations. Besides, the "Comment Issues" highlight above is important information for this test report. Responsible must read carefully about the description.

Test Engineer : Kimi Li
(Kimi Li, Engineer)

Check By : Charles Wang
(Charles Wang, Supervisor)

Approve & Authorized : Will Yauo
Will Yauo, Manager
EMC Dept. II of ELECTRONICS
TESTING CENTER, TAIWAN



Laboratory Introduction: Electronics Testing Center, Taiwan is recognized, filed and mutual recognition arrangement as following:

- ① ISO9002 : BSMI, TÜV Product Service
- ② ISO/IEC 17025 : BSMI, CNLA, DGT, NVLAP, CCIBLAC, UL, Compliance
- ③ EN45001 : TÜV Rheinland, NEMKO, FIMKO, SGS
- ④ Filing : FCC, Industry Canada, VCCI
- ⑤ MRA : Australia, Hong Kong, New Zealand, Singapore, USA, Japan, Korea, China, APLAC through CNLA

2. GENERAL INFORMATIONS

2.1 Description of EUT:

Audio Distribution System

2.2 Related Information of EUT:

Size of EUT : 43cm(W) × 36.5cm(D) × 14.5cm(H)

Power Adapter : 115/230Vac, 2A/1A

Signal Line : Nonshielded Shielded None, Length: 1.8 m

* For more detailed features , please refer to *User's Manual*.

2.3 Tested Configuration:

The EUT connected with other devices.

Following peripheral devices and interface cables were connected during the measurement:

| Device | Manufacture | Model | Description |
|-----------------------------|---------------------------|------------------|--|
| Audio Distribution System * | Amcli International Corp. | AD-8 | 1.8m Unshielded Signal Line |
| PC | Lenovo | 7298 RN1 | 1.8m Unshielded AC Power Cord |
| Load*7 | ---- | ---- | ---- |
| iPod | Apple | A1051 | 1.0m Unshielded Line |
| Speaker | YAMAHA | TSS-1 | 1.2m Unshielded AC Power Cord |
| MONITOR | DELL | 3008WFPt (MM646) | 1.8m Unshielded AC Power Cord 1.6m Shielded D-SUB data line 1.6m Shielded HDMI Cable |
| Keyboard | DELL | SK-8115 | 1.5m Shielded Cable |
| Mouse | DELL | M056UC | 1.5m Shielded Cable |

Remark “*” means equipment under test.

2.4 Deviation Record:

No modifications were required. (That is the EUT complied with the requirement as tested.)

2.5 Modification Record:

No modifications were required. (That is the EUT complied with the requirement as tested.)

3. SUMMARY OF TEST RESULTS

3.1 Emissions:

3.1.1 Conducted Emissions

[X] – PASS (Audio-1 In –Neutral)

Minimum EMI QP Margin to the limit: -18.99 dB at 17.1990 MHz

[X] – PASS (Audio-1 In –Line)

Minimum EMI QP Margin to the limit: -17.74 dB at 16.1860 MHz

[X] – PASS (Audio-2 In –Neutral)

Minimum EMI QP Margin to the limit: -18.85 dB at 17.1990 MHz

[X] – PASS (Audio-2 In –Line)

Minimum EMI QP Margin to the limit: -18.02 dB at 17.2910 MHz

[X] – PASS (Audio-3 In –Neutral)

Minimum EMI QP Margin to the limit: -18.38 dB at 17.2910 MHz

[X] – PASS (Audio-3 In –Line)

Minimum EMI QP Margin to the limit: -17.77 dB at 17.1990 MHz

[X] – PASS (Audio-4 In –Neutral)

Minimum EMI QP Margin to the limit: -16.89 dB at 1.0320 MHz

[X] – PASS (Audio-4 In –Line)

Minimum EMI QP Margin to the limit: -18.13 dB at 17.1990 MHz

[X] – PASS (Audio-5 In –Neutral)

Minimum EMI QP Margin to the limit: -18.39 dB at 18.9200 MHz

[X] – PASS (Audio-5 In –Line)

Minimum EMI QP Margin to the limit: -18.42 dB at 0.5155 MHz

[X] – PASS (Audio-6 In –Neutral)

Minimum EMI QP Margin to the limit: -18.20 dB at 17.2910 MHz

[X] – PASS (Audio-6 In –Line)

Minimum EMI QP Margin to the limit: -18.57 dB at 17.1990 MHz

[X] – PASS (Audio-7 In –Neutral)

Minimum EMI QP Margin to the limit: -18.07 dB at 17.1990 MHz

[X] – PASS (Audio-7 In –Line)

Minimum EMI QP Margin to the limit: -18.57 dB at 17.1990 MHz

[X] – PASS (Audio-8 In –Neutral)

Minimum EMI QP Margin to the limit: -18.14 dB at 0.5155 MHz

[X] – PASS (Audio-8 In –Line)

Minimum EMI QP Margin to the limit: -18.37 dB at 17.1990 MHz

3.1.2 Radiated Emissions (Absorbing Clamp)Test Data**[X] – PASS (Mode: POWER)**Minimum EMI Margin to the limit: -10.9 dB at 41.260 MHz**[X] – PASS (Mode: Source-1 Audio In)**Minimum EMI Margin to the limit: -12.2 dB at 196.580 MHz**[X] – PASS (Mode: Source-2 Audio In)**Minimum EMI Margin to the limit: -11.2 dB at 62.170 MHz**[X] – PASS (Mode: Source-3 Audio In)**Minimum EMI Margin to the limit: -11.3 dB at 51.970 MHz**[X] – PASS (Mode: Source-4 Audio In)**Minimum EMI Margin to the limit: -10.9 dB at 138.270 MHz**[X] – PASS (Mode: Source-5 Audio In)**Minimum EMI Margin to the limit: -11.9 dB at 135.480 MHz**[X] – PASS (Mode: Source-6 Audio In)**Minimum EMI Margin to the limit: -10.9 dB at 73.110 MHz**[X] – PASS (Mode: Source-7 Audio In)**Minimum EMI Margin to the limit: -11.5 dB at 117.860 MHz**[X] – PASS (Mode: Source-8 Audio In)**Minimum EMI Margin to the limit: -12.1 dB at 193.620 MHz**[X] – PASS (Mode: Source-1 Audio Out)**Minimum EMI Margin to the limit: -10.8 dB at 57.110 MHz**[X] – PASS (Mode: Source-2 Audio Out)**Minimum EMI Margin to the limit: -9.0 dB at 136.690 MHz**[X] – PASS (Mode: Source-3 Audio Out)**Minimum EMI Margin to the limit: -12.2 dB at 109.340 MHz**[X] – PASS (Mode: Source-4 Audio Out)**Minimum EMI Margin to the limit: -10.4 dB at 152.330 MHz**[X] – PASS (Mode: Source-5 Audio Out)**Minimum EMI Margin to the limit: -11.3 dB at 73.110 MHz**[X] – PASS (Mode: Source-6 Audio Out)**Minimum EMI Margin to the limit: -10.9 dB at 249.630 MHz**[X] – PASS (Mode: Source-7 Audio Out)**Minimum EMI Margin to the limit: -10.9 dB at 71.340 MHz**[X] – PASS (Mode: Source-8 Audio Out)**Minimum EMI Margin to the limit: -9.5 dB at 96.390 MHz**[X] – PASS (Mode: Zone-1 Audio Out)**Minimum EMI Margin to the limit: -8.8 dB at 47.310 MHz**[X] – PASS (Mode: Zone-2 Audio Out)**Minimum EMI Margin to the limit: -11.0 dB at 69.230 MHz**[X] – PASS (Mode: Zone-3 Audio Out)**Minimum EMI Margin to the limit: -10.2 dB at 206.340 MHz**[X] – PASS (Mode: Zone-4 Audio Out)**Minimum EMI Margin to the limit: -11.7 dB at 198.360 MHz**[X] – PASS (Mode: Zone-5 Audio Out)**Minimum EMI Margin to the limit: -12.5 dB at 53.690 MHz**[X] – PASS (Mode: Zone-6 Audio Out)**Minimum EMI Margin to the limit: -8.8 dB at 194.820 MHz

[X] – PASS (Mode: Zone-7 Audio Out)Minimum EMI Margin to the limit: -10.7 dB at 218.360 MHz**[X] – PASS (Mode: Zone-8 Audio Out)**Minimum EMI Margin to the limit: -10.3 dB at 206.340 MHz**[X] – PASS (Mode: RS232)**Minimum EMI Margin to the limit: -8.7 dB at 193.570 MHz**3.1.4 Harmonics Current Emissions****[X] –PASS**

The harmonics current values were under the limits of the class A equipment of the EN 61000-3-2

3.1.5 Voltage Fluctuations and Flicker**[X] –PASS**

The voltage fluctuations and flicker values were under the limits of the EN 61000-3-3 requirements.

4. TEST DATA & RELATED INFORMATIONS

4.1 Emissions:

4.1.1 Conducted Emissions Test :

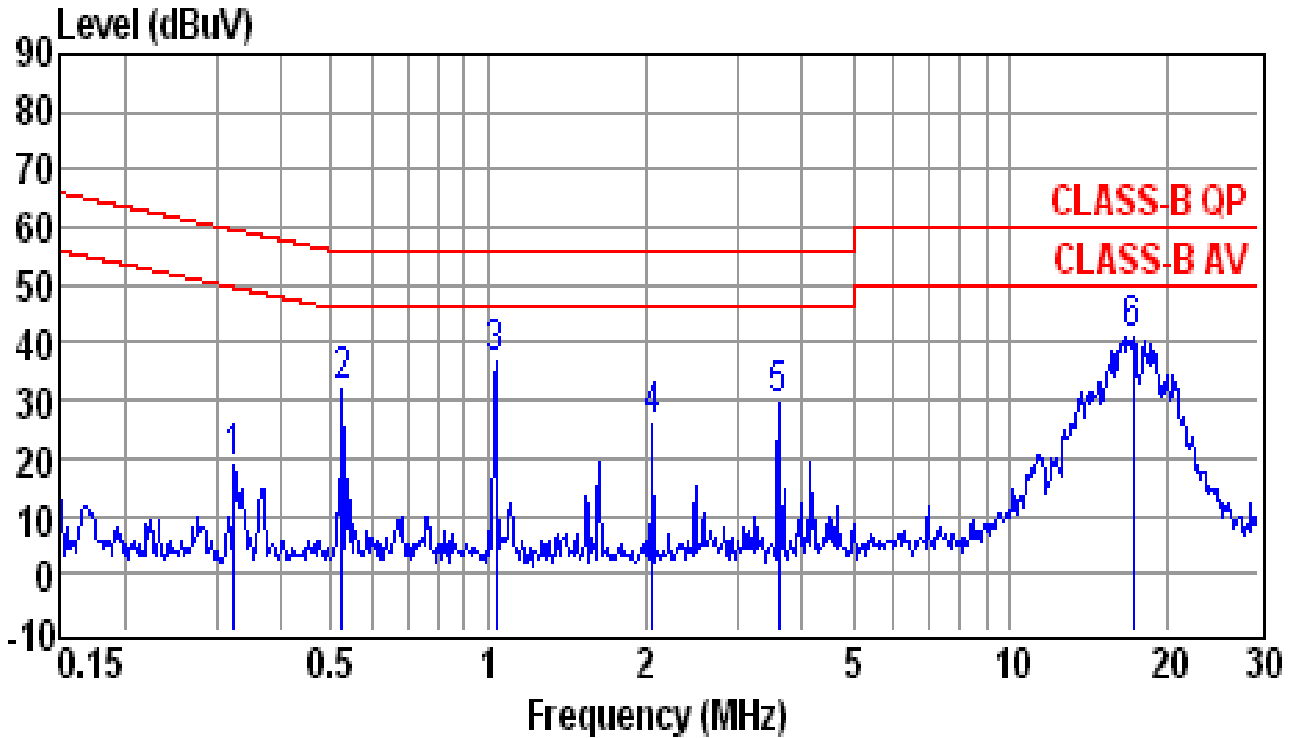
4.1.1.1 Conducted Emissions Test Data:

1. Operating Conditions of The EUT : Audio-1 In

Test Date : May. 23, 2011

| | | | | |
|---------------------|---|-----------|----------------------------------|----------------|
| Test Specification | EN 55013:2001/A1:2003/A2:2006 (Class B) | | | |
| Equipment | Manufacturer | Model No. | Calibration Date | Next Cal. Date |
| EMI Test Receiver | Rohde & Schwarz | ESCI | 2011/02/02 | 2012/02/01 |
| LISN | EMCO | 3625/2 | 2011/03/01 | 2012/02/28 |
| LISN | Rohde & Schwarz | ESH2-Z5 | 2010/08/10 | 2011/08/09 |
| Climatic Condition | Ambient Temperature: <u>23</u> °C | | Relative Humidity: <u>58</u> %RH | |
| Power Supply System | AC Power : <u>230</u> Vac <u>50</u> Hz | | | |
| Test Set-up | Table-top Equipment | | | |

Test data see the next pages.

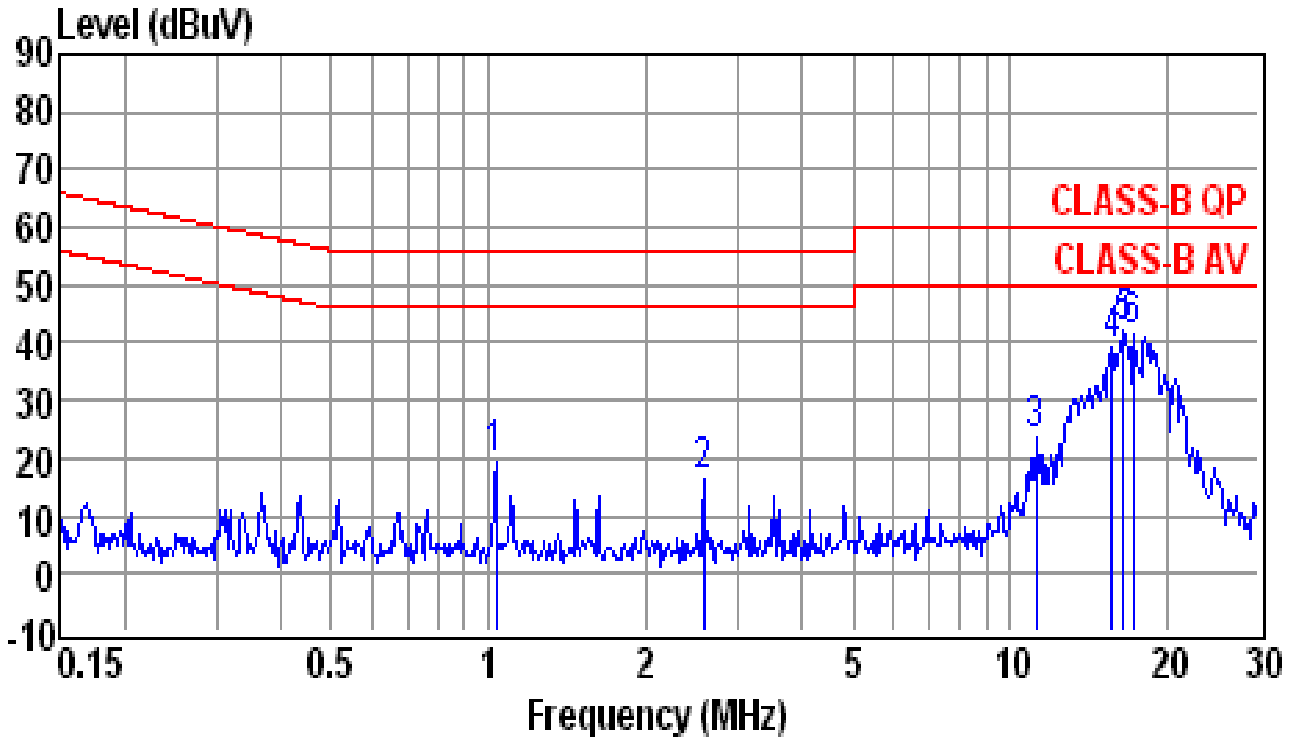


| | | | |
|-----------|----------------|--------------|--------------|
| Site | : conducted #1 | Date | : 05-23-2011 |
| Condition | : CLASS-B QP | LISN | : NEUTRAL |
| Tem / Hum | : 23 / 58% | Test Mode | : Audio-1 In |
| EUT | : AD-8 | Power Rating | : 230V/50Hz |

| Freq (MHz) | Reading (dBUV) | Factor (dB) | Emission Level (dBUV) | Limit Line (dBUV) | Over Limit (dB) | Remark |
|------------|----------------|-------------|-----------------------|-------------------|-----------------|--------|
| 0.3251 | 18.67 | 0.26 | 18.93 | 59.57 | -40.64 | QP |
| 0.5238 | 31.74 | 0.27 | 32.01 | 56.00 | -23.99 | QP |
| 1.0320 | 36.69 | 0.30 | 36.99 | 56.00 | -19.01 | QP |
| 2.0660 | 25.71 | 0.36 | 26.07 | 56.00 | -29.93 | QP |
| 3.6030 | 29.05 | 0.44 | 29.49 | 56.00 | -26.51 | QP |
| 17.1990 | 40.11 | 0.90 | 41.01 | 60.00 | -18.99 | QP |

Note :

1. Result = Reading + Factor
2. Factor = LISN Factor + Cable Loss



| | | | |
|-----------|----------------|--------------|--------------|
| Site | : conducted #1 | Date | : 05-23-2011 |
| Condition | : CLASS-B QP | LISN | : LINE |
| Tem / Hum | : 23 / 58% | Test Mode | : Audio-1 In |
| EUT | : AD-8 | Power Rating | : 230V/50Hz |

| Freq (MHz) | Reading (dBUV) | Factor (dB) | Emission Level (dBUV) | Limit Line (dBUV) | Over Limit (dB) | Remark |
|------------|----------------|-------------|-----------------------|-------------------|-----------------|--------|
| 1.0320 | 18.80 | 0.30 | 19.10 | 56.00 | -36.90 | QP |
| 2.5810 | 15.86 | 0.39 | 16.25 | 56.00 | -39.75 | QP |
| 11.2570 | 23.01 | 0.71 | 23.72 | 60.00 | -36.28 | QP |
| 15.7180 | 38.28 | 0.87 | 39.15 | 60.00 | -20.85 | QP |
| 16.4860 | 41.38 | 0.88 | 42.26 | 60.00 | -17.74 | QP |
| 17.2910 | 40.88 | 0.90 | 41.78 | 60.00 | -18.22 | QP |

Note :

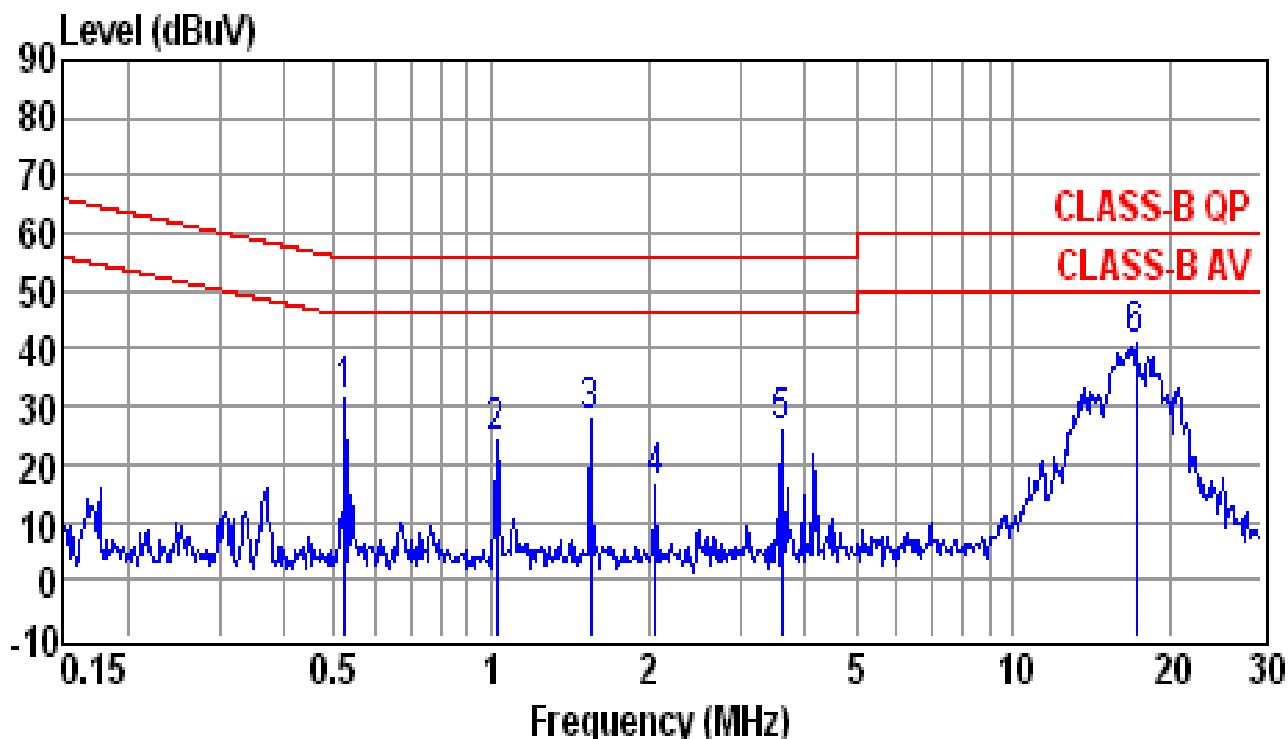
1. Result = Reading + Factor
2. Factor = LISN Factor + Cable Loss

2. Operating Conditions of The EUT : Audio-2 In

Test Date : May. 23, 2011

| | | | | |
|---------------------|---|-----------|----------------------------------|----------------|
| Test Specification | EN 55013:2001/A1:2003/A2:2006 (Class B) | | | |
| Equipment | Manufacturer | Model No. | Calibration Date | Next Cal. Date |
| EMI Test Receiver | Rohde & Schwarz | ESCI | 2011/02/02 | 2012/02/01 |
| LISN | EMCO | 3625/2 | 2011/03/01 | 2012/02/28 |
| LISN | Rohde & Schwarz | ESH2-Z5 | 2010/08/10 | 2011/08/09 |
| Climatic Condition | Ambient Temperature: <u>23</u> °C | | Relative Humidity: <u>58</u> %RH | |
| Power Supply System | AC Power : <u>230</u> Vac <u>50</u> Hz | | | |
| Test Set-up | Table-top Equipment | | | |

Test data see the next pages.

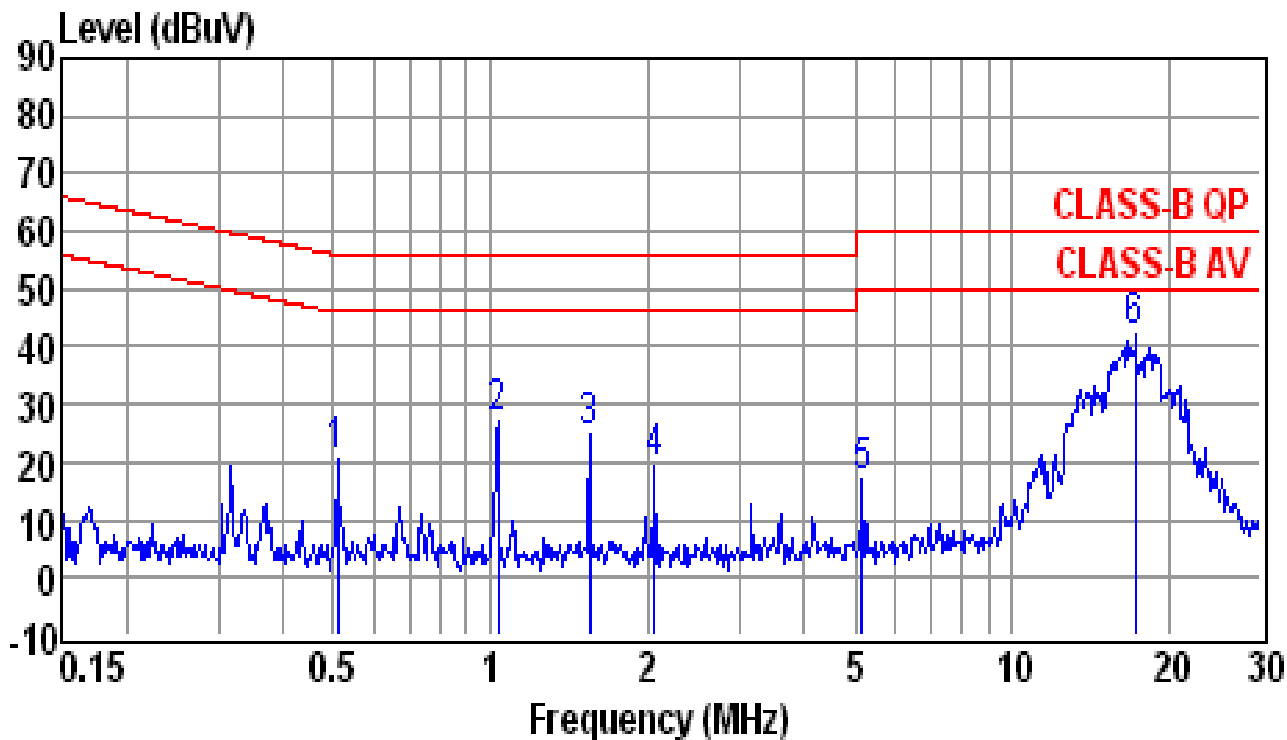


Site : conducted #1 Date : 05-23-2011
 Condition : CLASS-B QP LISN : NEUTRAL
 Tem / Hum : 23 / 58% Test Mode : Audio-2 In
 EUT : AD-8 Power Rating : 230V/50Hz

| Freq (MHz) | Reading (dBuV) | Factor (dB) | Emission Level (dBuV) | Limit Line (dBuV) | Over Limit (dB) | Remark |
|------------|----------------|-------------|-----------------------|-------------------|-----------------|--------|
| 0.5238 | 31.34 | 0.27 | 31.61 | 56.00 | -24.39 | QP |
| 1.0210 | 23.68 | 0.30 | 23.98 | 56.00 | -32.02 | QP |
| 1.5520 | 27.64 | 0.34 | 27.98 | 56.00 | -28.02 | QP |
| 2.0660 | 15.96 | 0.36 | 16.32 | 56.00 | -39.68 | QP |
| 3.6030 | 25.64 | 0.44 | 26.08 | 56.00 | -29.92 | QP |
| 17.1990 | 40.25 | 0.90 | 41.15 | 60.00 | -18.85 | QP |

Note :

1. Result = Reading + Factor
2. Factor = LISN Factor + Cable Loss



| | | | |
|-----------|----------------|--------------|--------------|
| Site | : conducted #1 | Date | : 05-23-2011 |
| Condition | : CLASS-B QP | LISN | : LINE |
| Tem / Hum | : 23 / 58% | Test Mode | : Audio-2 In |
| EUT | : AD-8 | Power Rating | : 230V/50Hz |

| Freq (MHz) | Reading (dBUV) | Factor (dB) | Emission Level (dBUV) | Limit Line (dBUV) | Over Limit (dB) | Remark |
|------------|----------------|-------------|-----------------------|-------------------|-----------------|--------|
| 0.5074 | 20.34 | 0.27 | 20.61 | 56.00 | -35.39 | QP |
| 1.0320 | 26.93 | 0.30 | 27.23 | 56.00 | -28.77 | QP |
| 1.5520 | 24.51 | 0.34 | 24.85 | 56.00 | -31.15 | QP |
| 2.0660 | 18.90 | 0.36 | 19.26 | 56.00 | -36.74 | QP |
| 5.1660 | 16.21 | 0.50 | 16.71 | 60.00 | -43.29 | QP |
| 17.2910 | 41.08 | 0.90 | 41.98 | 60.00 | -18.02 | QP |

Note :

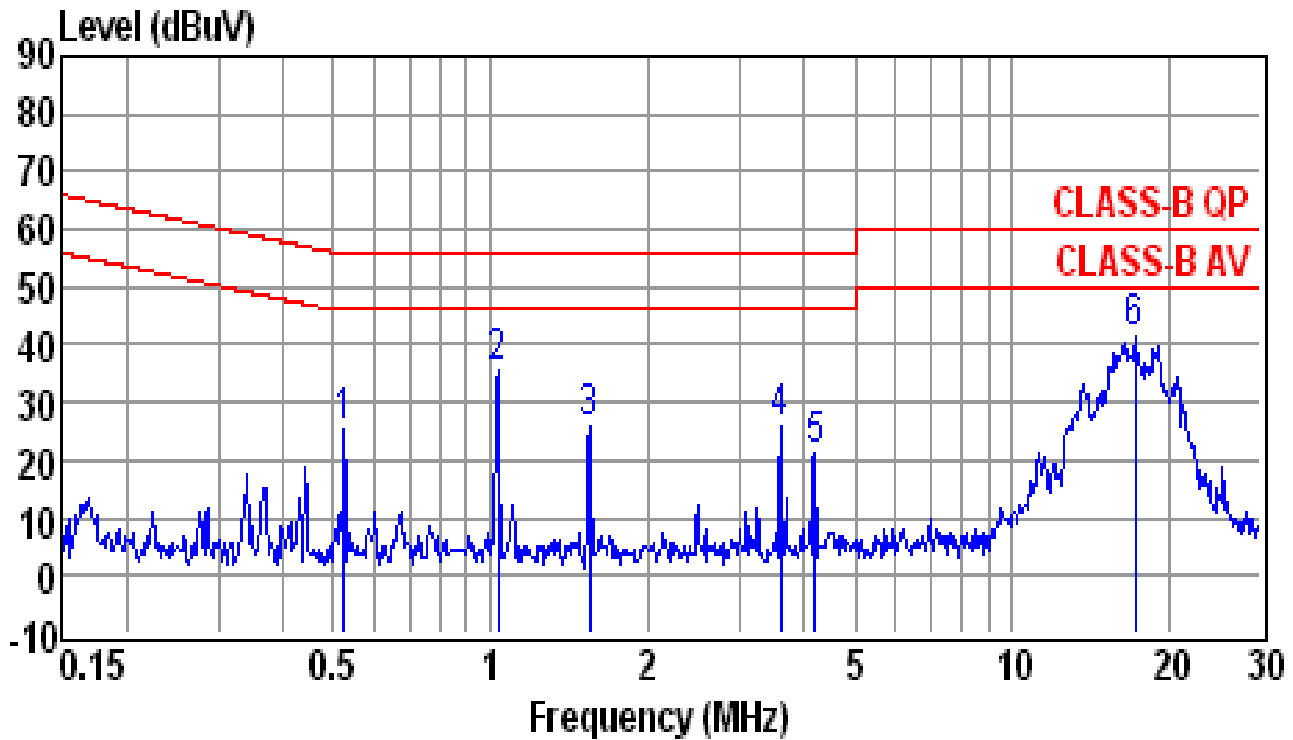
1. Result = Reading + Factor
2. Factor = LISN Factor + Cable Loss

3. Operating Conditions of The EUT : Audio-3 In

Test Date : May. 23, 2011

| | | | | |
|---------------------|---|-----------|----------------------------------|----------------|
| Test Specification | EN 55013:2001/A1:2003/A2:2006 (Class B) | | | |
| Equipment | Manufacturer | Model No. | Calibration Date | Next Cal. Date |
| EMI Test Receiver | Rohde & Schwarz | ESCI | 2011/02/02 | 2012/02/01 |
| LISN | EMCO | 3625/2 | 2011/03/01 | 2012/02/28 |
| LISN | Rohde & Schwarz | ESH2-Z5 | 2010/08/10 | 2011/08/09 |
| Climatic Condition | Ambient Temperature: <u>23</u> °C | | Relative Humidity: <u>58</u> %RH | |
| Power Supply System | AC Power : <u>230</u> Vac <u>50</u> Hz | | | |
| Test Set-up | Table-top Equipment | | | |

Test data see the next pages.

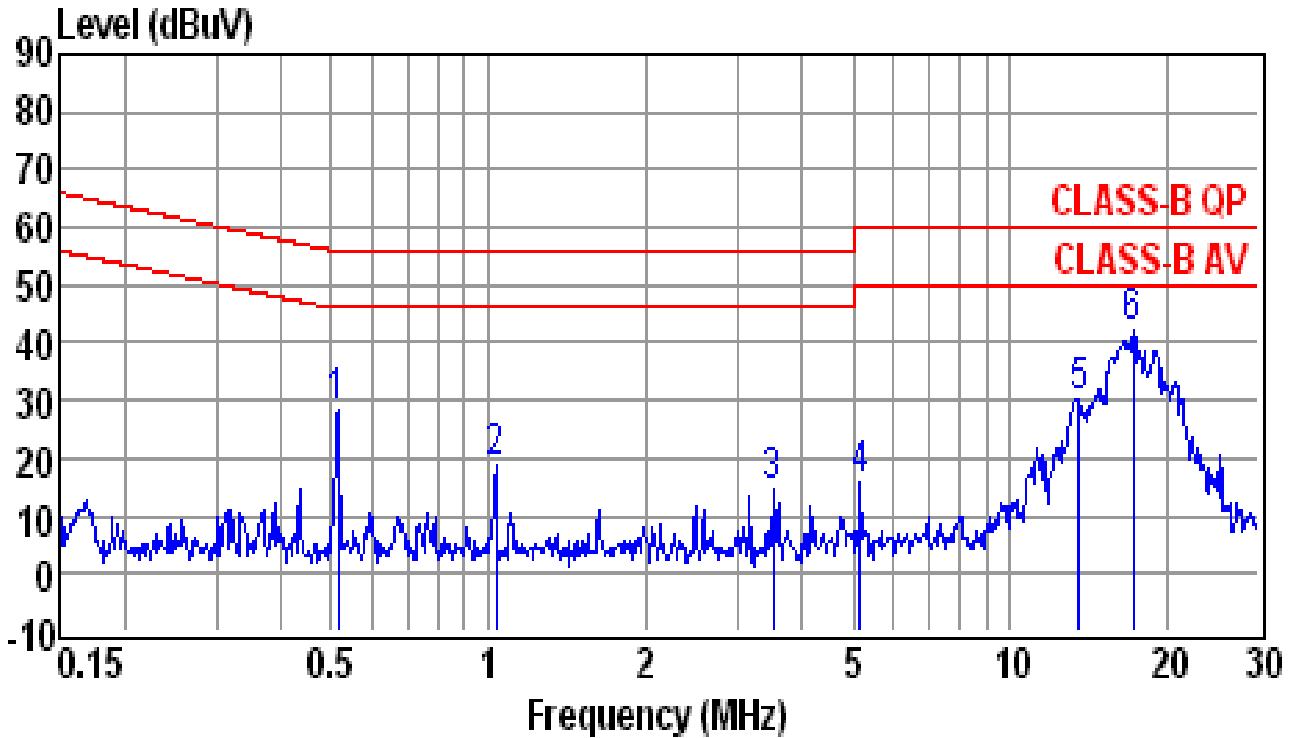


| | | | |
|-----------|----------------|--------------|--------------|
| Site | : conducted #1 | Date | : 05-23-2011 |
| Condition | : CLASS-B QP | LISN | : NEUTRAL |
| Tem / Hum | : 23 / 58% | Test Mode | : Audio-3 In |
| EUT | : AD-8 | Power Rating | : 230V/50Hz |

| Freq (MHz) | Reading (dBUV) | Factor (dB) | Emission Level (dBUV) | Limit Line (dBUV) | Over Limit (dB) | Remark |
|------------|----------------|-------------|-----------------------|-------------------|-----------------|--------|
| 0.5238 | 25.31 | 0.27 | 25.58 | 56.00 | -30.42 | QP |
| 1.0320 | 35.32 | 0.30 | 35.62 | 56.00 | -20.38 | QP |
| 1.5520 | 25.81 | 0.34 | 26.15 | 56.00 | -29.85 | QP |
| 3.6030 | 25.72 | 0.44 | 26.16 | 56.00 | -29.84 | QP |
| 4.2020 | 20.76 | 0.46 | 21.22 | 56.00 | -34.78 | QP |
| 17.2910 | 40.72 | 0.90 | 41.62 | 60.00 | -18.38 | QP |

Note :

1. Result = Reading + Factor
2. Factor = LISN Factor + Cable Loss



| | | | |
|-----------|----------------|--------------|--------------|
| Site | : conducted #1 | Date | : 05-23-2011 |
| Condition | : CLASS-B QP | LISN | : LINE |
| Tem / Hum | : 23 / 58% | Test Mode | : Audio-3 In |
| EUT | : AD-8 | Power Rating | : 230V/50Hz |

| Freq (MHz) | Reading (dBUV) | Factor (dB) | Emission Level (dBUV) | Limit Line (dBUV) | Over Limit (dB) | Remark |
|------------|----------------|-------------|-----------------------|-------------------|-----------------|--------|
| 0.5155 | 28.32 | 0.27 | 28.59 | 56.00 | -27.41 | QP |
| 1.0320 | 18.48 | 0.30 | 18.78 | 56.00 | -37.22 | QP |
| 3.5090 | 13.87 | 0.43 | 14.30 | 56.00 | -41.70 | QP |
| 5.1660 | 15.22 | 0.50 | 15.72 | 60.00 | -44.28 | QP |
| 13.5510 | 29.61 | 0.80 | 30.41 | 60.00 | -29.59 | QP |
| 17.1990 | 41.33 | 0.90 | 42.23 | 60.00 | -17.77 | QP |

Note :

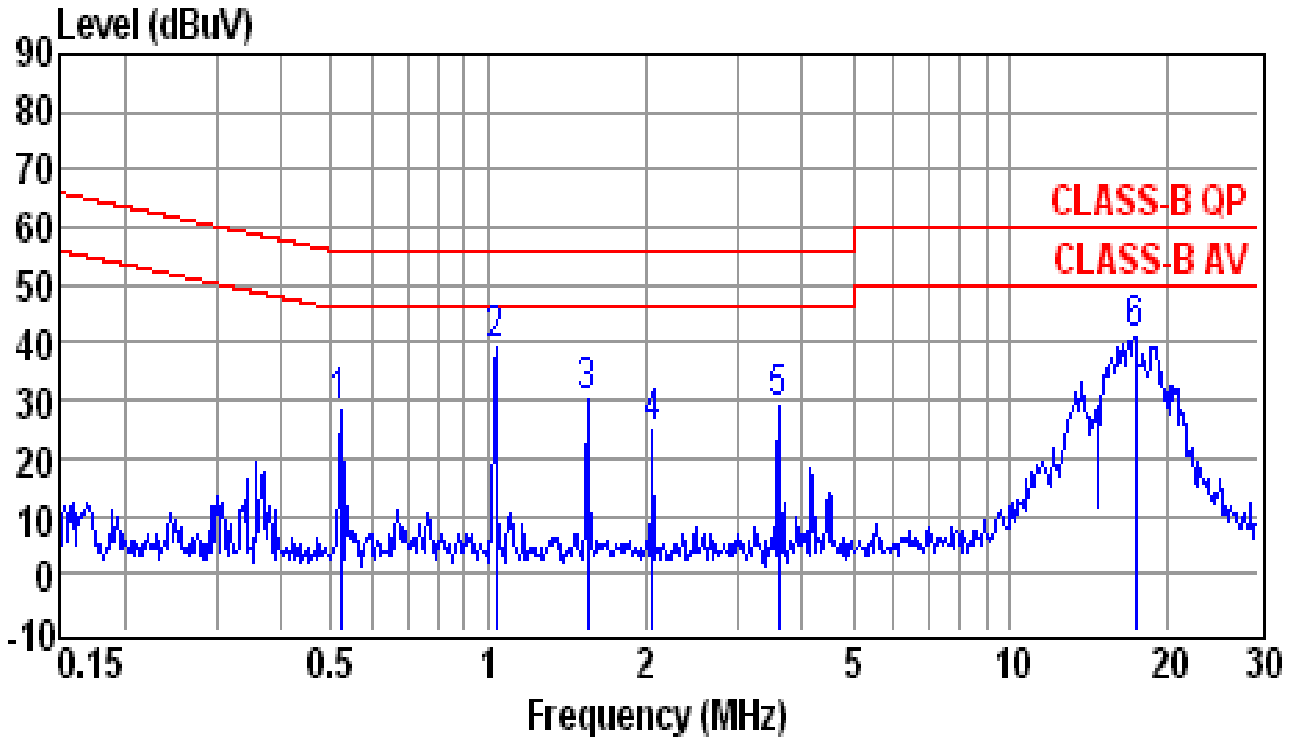
1. Result = Reading + Factor
2. Factor = LISN Factor + Cable Loss

4. Operating Conditions of The EUT : Audio-4 In

Test Date : May. 23, 2011

| | | | | |
|---------------------|---|-----------|----------------------------------|----------------|
| Test Specification | EN 55013:2001/A1:2003/A2:2006 (Class B) | | | |
| Equipment | Manufacturer | Model No. | Calibration Date | Next Cal. Date |
| EMI Test Receiver | Rohde & Schwarz | ESCI | 2011/02/02 | 2012/02/01 |
| LISN | EMCO | 3625/2 | 2011/03/01 | 2012/02/28 |
| LISN | Rohde & Schwarz | ESH2-Z5 | 2010/08/10 | 2011/08/09 |
| Climatic Condition | Ambient Temperature: <u>23</u> °C | | Relative Humidity: <u>58</u> %RH | |
| Power Supply System | AC Power : <u>230</u> Vac <u>50</u> Hz | | | |
| Test Set-up | Table-top Equipment | | | |

Test data see the next pages.

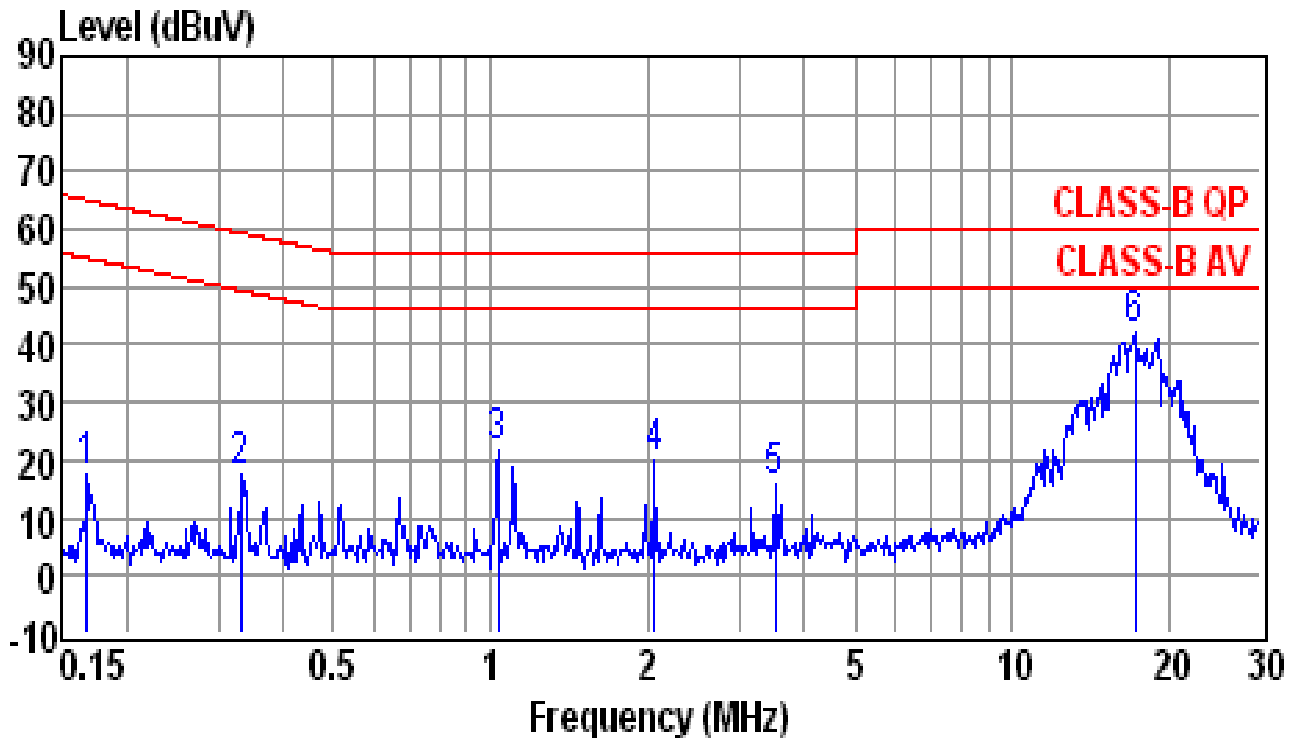


| | | | |
|-----------|----------------|--------------|--------------|
| Site | : conducted #1 | Date | : 05-23-2011 |
| Condition | : CLASS-B QP | LISN | : NEUTRAL |
| Tem / Hum | : 23 / 58% | Test Mode | : Audio-4 In |
| EUT | : AD-8 | Power Rating | : 230V/50Hz |

| Freq (MHz) | Reading (dBUV) | Factor (dB) | Emission Level (dBUV) | Limit Line (dBUV) | Over Limit (dB) | Remark |
|------------|----------------|-------------|-----------------------|-------------------|-----------------|--------|
| 0.5210 | 28.28 | 0.27 | 28.55 | 56.00 | -27.45 | QP |
| 1.0320 | 38.81 | 0.30 | 39.11 | 56.00 | -16.89 | QP |
| 1.5520 | 30.07 | 0.34 | 30.41 | 56.00 | -25.59 | QP |
| 2.0660 | 24.18 | 0.36 | 24.54 | 56.00 | -31.46 | QP |
| 3.6030 | 28.65 | 0.44 | 29.09 | 56.00 | -26.91 | QP |
| 17.4750 | 40.13 | 0.90 | 41.03 | 60.00 | -18.97 | QP |

Note :

1. Result = Reading + Factor
2. Factor = LISN Factor + Cable Loss



| | | | |
|-----------|----------------|--------------|--------------|
| Site | : conducted #1 | Date | : 05-23-2011 |
| Condition | : CLASS-B QP | LISN | : LINE |
| Tem / Hum | : 23 / 58% | Test Mode | : Audio-4 In |
| EUT | : AD-8 | Power Rating | : 230V/50Hz |

| Freq (MHz) | Reading (dBUV) | Factor (dB) | Emission Level (dBUV) | Limit Line (dBUV) | Over Limit (dB) | Remark |
|------------|----------------|-------------|-----------------------|-------------------|-----------------|--------|
| 0.1677 | 17.44 | 0.23 | 17.67 | 65.08 | -47.41 | QP |
| 0.3321 | 17.56 | 0.26 | 17.82 | 59.40 | -41.58 | QP |
| 1.0320 | 21.21 | 0.30 | 21.51 | 56.00 | -34.49 | QP |
| 2.0660 | 19.57 | 0.36 | 19.93 | 56.00 | -36.07 | QP |
| 3.5090 | 15.08 | 0.43 | 15.51 | 56.00 | -40.49 | QP |
| 17.1990 | 40.97 | 0.90 | 41.87 | 60.00 | -18.13 | QP |

Note :

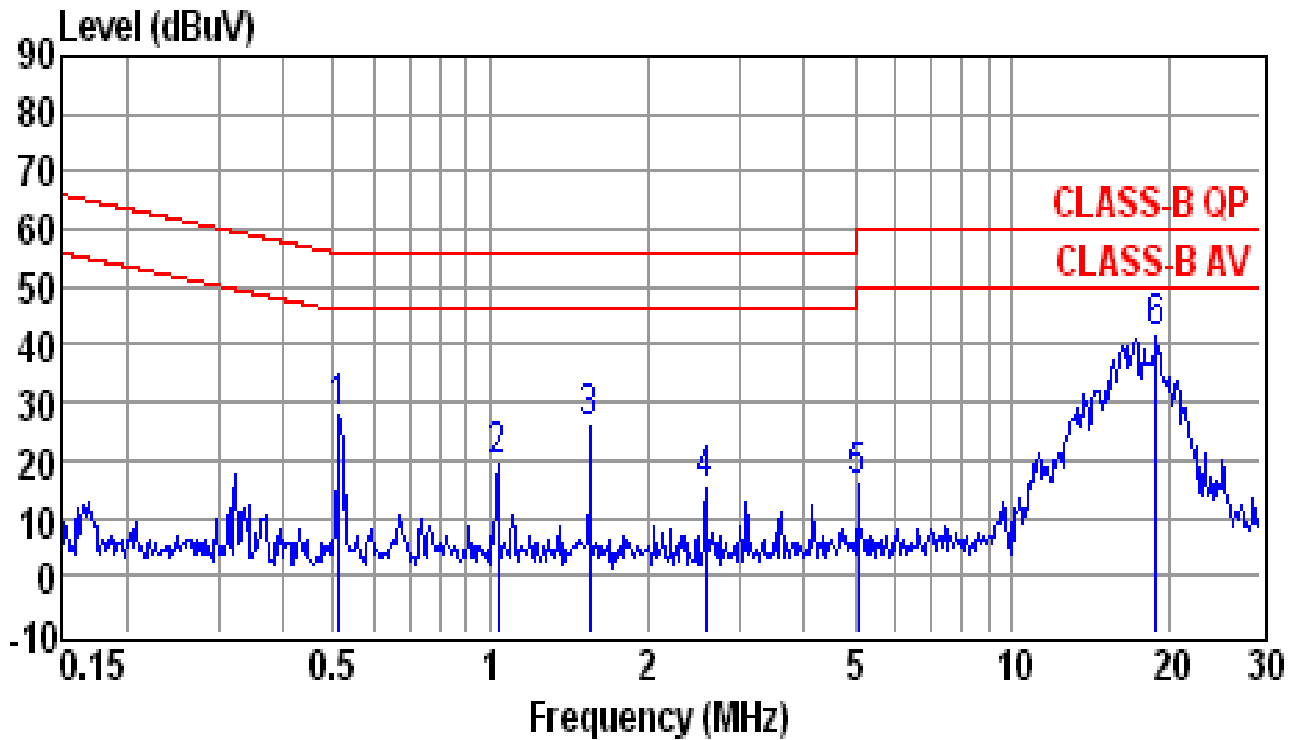
1. Result = Reading + Factor
2. Factor = LISN Factor + Cable Loss

5. Operating Conditions of The EUT : Audio-5 In

Test Date : May. 23, 2011

| | | | | |
|---------------------|---|-----------|----------------------------------|----------------|
| Test Specification | EN 55013:2001/A1:2003/A2:2006 (Class B) | | | |
| Equipment | Manufacturer | Model No. | Calibration Date | Next Cal. Date |
| EMI Test Receiver | Rohde & Schwarz | ESCI | 2011/02/02 | 2012/02/01 |
| LISN | EMCO | 3625/2 | 2011/03/01 | 2012/02/28 |
| LISN | Rohde & Schwarz | ESH2-Z5 | 2010/08/10 | 2011/08/09 |
| Climatic Condition | Ambient Temperature: <u>23</u> °C | | Relative Humidity: <u>58</u> %RH | |
| Power Supply System | AC Power : <u>230</u> Vac <u>50</u> Hz | | | |
| Test Set-up | Table-top Equipment | | | |

Test data see the next pages.

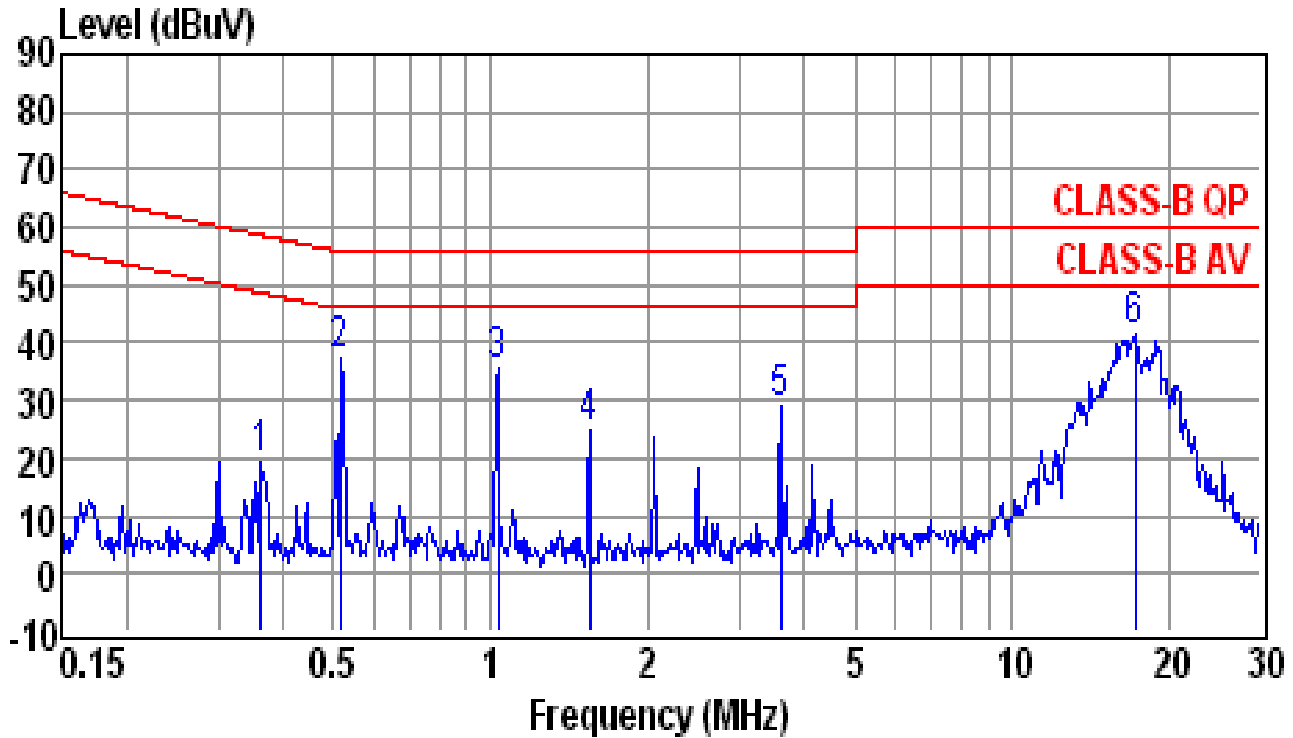


| | | | |
|-----------|----------------|--------------|--------------|
| Site | : conducted #1 | Date | : 05-23-2011 |
| Condition | : CLASS-B QP | LISN | : NEUTRAL |
| Tem / Hum | : 23 / 58% | Test Mode | : Audio-5 In |
| EUT | : AD-8 | Power Rating | : 230V/50Hz |

| Freq (MHz) | Reading (dBUV) | Factor (dB) | Emission Level (dBUV) | Limit Line (dBUV) | Over Limit (dB) | Remark |
|------------|----------------|-------------|-----------------------|-------------------|-----------------|--------|
| 0.5128 | 27.18 | 0.27 | 27.45 | 56.00 | -28.55 | QP |
| 1.0320 | 18.84 | 0.30 | 19.14 | 56.00 | -36.86 | QP |
| 1.5520 | 25.81 | 0.34 | 26.15 | 56.00 | -29.85 | QP |
| 2.5810 | 14.77 | 0.39 | 15.16 | 56.00 | -40.84 | QP |
| 5.0850 | 14.99 | 0.50 | 15.49 | 60.00 | -44.51 | QP |
| 18.9200 | 40.67 | 0.94 | 41.61 | 60.00 | -18.39 | QP |

Note :

1. Result = Reading + Factor
2. Factor = LISN Factor + Cable Loss



| | | | |
|-----------|----------------|--------------|--------------|
| Site | : conducted #1 | Date | : 05-23-2011 |
| Condition | : CLASS-B QP | LISN | : LINE |
| Tem / Hum | : 23 / 58% | Test Mode | : Audio-5 In |
| EUT | : AD-8 | Power Rating | : 230V/50Hz |

| Freq (MHz) | Reading (dBUV) | Factor (dB) | Emission Level (dBUV) | Limit Line (dBUV) | Over Limit (dB) | Remark |
|------------|----------------|-------------|-----------------------|-------------------|-----------------|--------|
| 0.3634 | 19.11 | 0.26 | 19.37 | 58.65 | -39.28 | QP |
| 0.5155 | 37.31 | 0.27 | 37.58 | 56.00 | -18.42 | QP |
| 1.0320 | 35.28 | 0.30 | 35.58 | 56.00 | -20.42 | QP |
| 1.5520 | 24.47 | 0.34 | 24.81 | 56.00 | -31.19 | QP |
| 3.6030 | 28.49 | 0.44 | 28.93 | 56.00 | -27.07 | QP |
| 17.1990 | 40.63 | 0.90 | 41.53 | 60.00 | -18.47 | QP |

Note :

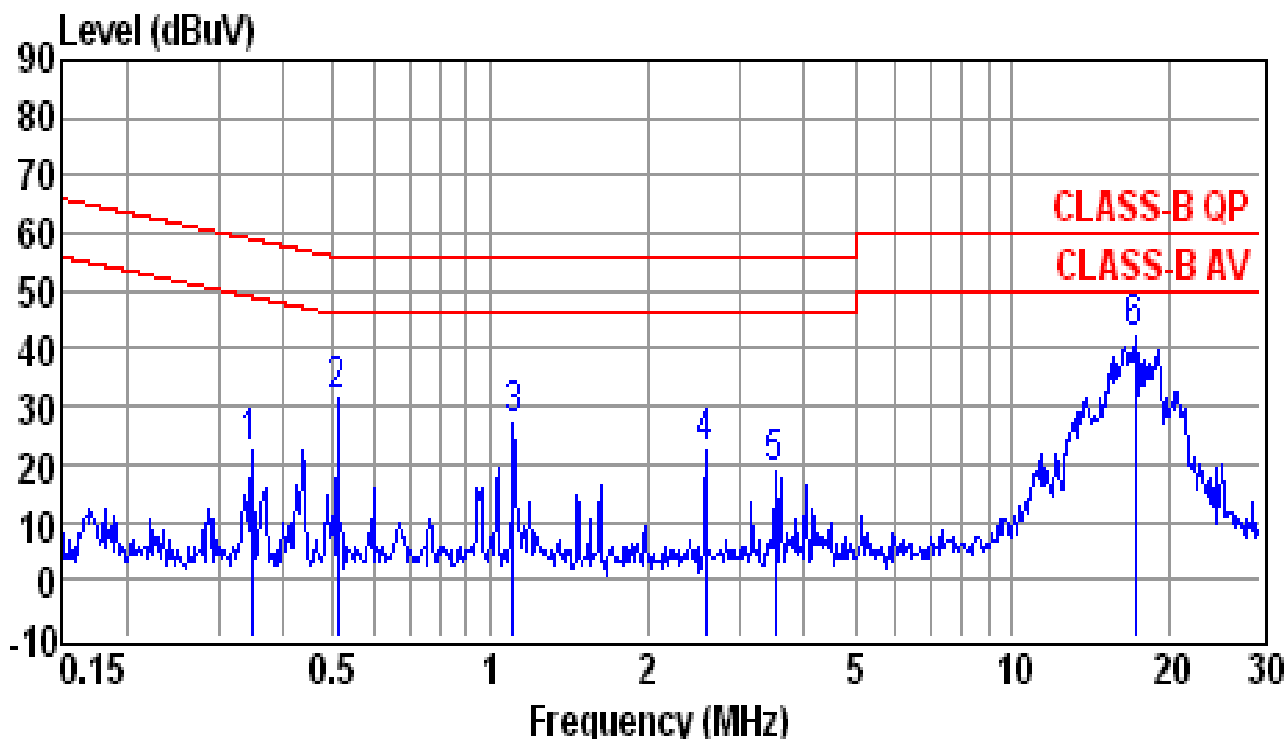
1. Result = Reading + Factor
2. Factor = LISN Factor + Cable Loss

6. Operating Conditions of The EUT : Audio-6 In

Test Date : May. 23, 2011

| | | | | |
|---------------------|---|-----------|----------------------------------|----------------|
| Test Specification | EN 55013:2001/A1:2003/A2:2006 (Class B) | | | |
| Equipment | Manufacturer | Model No. | Calibration Date | Next Cal. Date |
| EMI Test Receiver | Rohde & Schwarz | ESCI | 2011/02/02 | 2012/02/01 |
| LISN | EMCO | 3625/2 | 2011/03/01 | 2012/02/28 |
| LISN | Rohde & Schwarz | ESH2-Z5 | 2010/08/10 | 2011/08/09 |
| Climatic Condition | Ambient Temperature: <u>23</u> °C | | Relative Humidity: <u>58</u> %RH | |
| Power Supply System | AC Power : <u>230</u> Vac <u>50</u> Hz | | | |
| Test Set-up | Table-top Equipment | | | |

| |
|--------------------------------------|
| Test data see the next pages. |
|--------------------------------------|

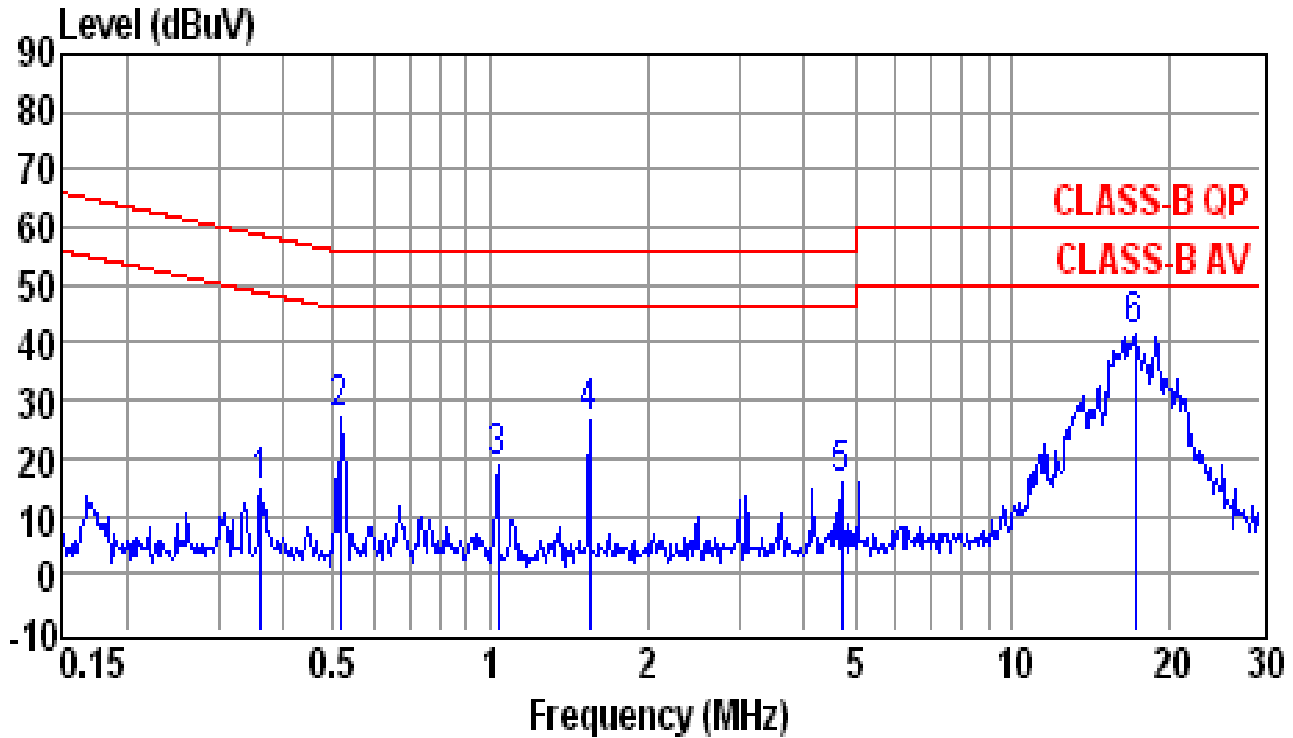


| | | | |
|-----------|----------------|--------------|--------------|
| Site | : conducted #1 | Date | : 05-23-2011 |
| Condition | : CLASS-B QP | LISN | : NEUTRAL |
| Tem / Hum | : 23 / 58% | Test Mode | : Audio-6 In |
| EUT | : AD-8 | Power Rating | : 230V/50Hz |

| Freq (MHz) | Reading (dBUV) | Factor (dB) | Emission Level (dBUV) | Limit Line (dBUV) | Over Limit (dB) | Remark |
|------------|----------------|-------------|-----------------------|-------------------|-----------------|--------|
| 0.3483 | 22.37 | 0.26 | 22.63 | 59.00 | -36.37 | QP |
| 0.5074 | 31.34 | 0.27 | 31.61 | 56.00 | -24.39 | QP |
| 1.1060 | 26.88 | 0.31 | 27.19 | 56.00 | -28.81 | QP |
| 2.5810 | 22.09 | 0.39 | 22.48 | 56.00 | -33.52 | QP |
| 3.5090 | 18.25 | 0.43 | 18.68 | 56.00 | -37.32 | QP |
| 17.2910 | 40.90 | 0.90 | 41.80 | 60.00 | -18.20 | QP |

Note :

1. Result = Reading + Factor
2. Factor = LISN Factor + Cable Loss



| | | | |
|-----------|----------------|--------------|--------------|
| Site | : conducted #1 | Date | : 05-23-2011 |
| Condition | : CLASS-B QP | LISN | : LINE |
| Tem / Hum | : 23 / 58% | Test Mode | : Audio-6 In |
| EUT | : AD-8 | Power Rating | : 230V/50Hz |

| Freq (MHz) | Reading (dBUV) | Factor (dB) | Emission Level (dBUV) | Limit Line (dBUV) | Over Limit (dB) | Remark |
|------------|----------------|-------------|-----------------------|-------------------|-----------------|--------|
| 0.3634 | 14.37 | 0.26 | 14.63 | 58.65 | -44.02 | QP |
| 0.5155 | 26.80 | 0.27 | 27.07 | 56.00 | -28.93 | QP |
| 1.0320 | 18.46 | 0.30 | 18.76 | 56.00 | -37.24 | QP |
| 1.5520 | 26.30 | 0.34 | 26.64 | 56.00 | -29.36 | QP |
| 4.7210 | 15.22 | 0.49 | 15.71 | 56.00 | -40.29 | QP |
| 17.1990 | 40.53 | 0.90 | 41.43 | 60.00 | -18.57 | QP |

Note :

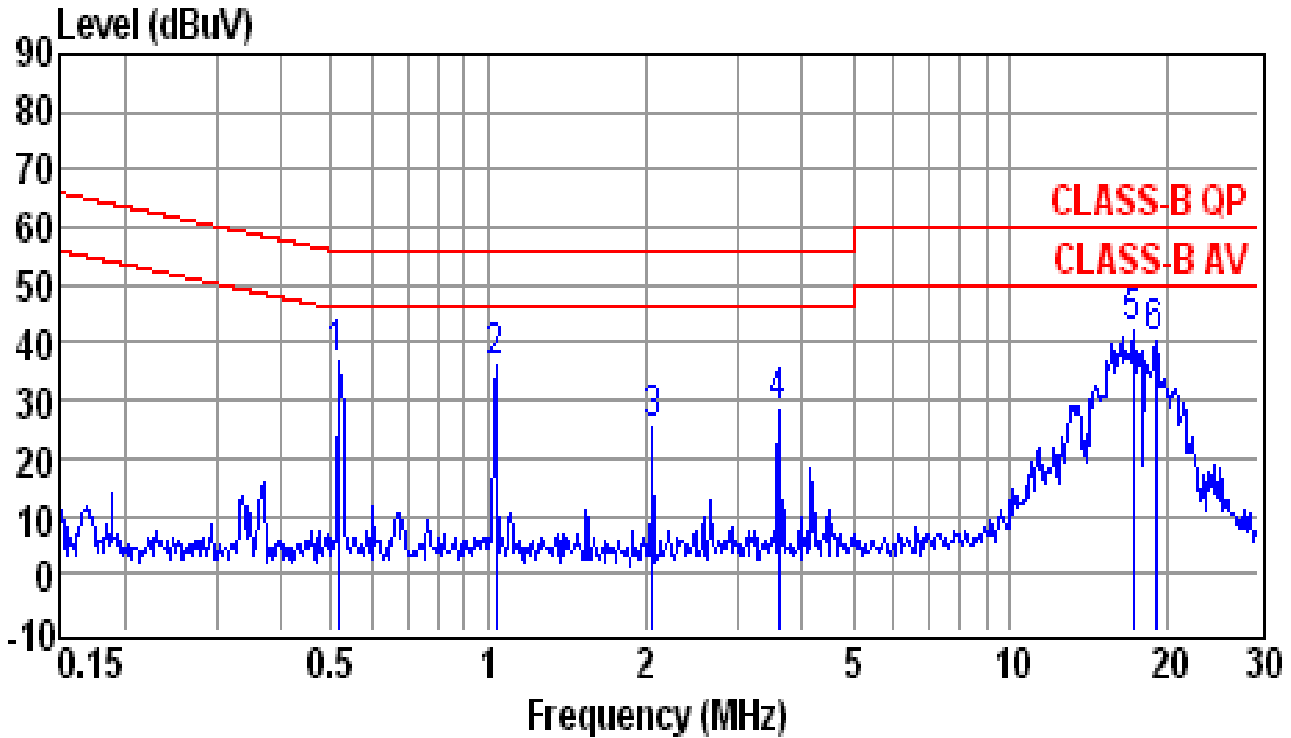
1. Result = Reading + Factor
2. Factor = LISN Factor + Cable Loss

7. Operating Conditions of The EUT : Audio-7 In

Test Date : May. 23, 2011

| | | | | |
|---------------------|---|-----------|----------------------------------|----------------|
| Test Specification | EN 55013:2001/A1:2003/A2:2006 (Class B) | | | |
| Equipment | Manufacturer | Model No. | Calibration Date | Next Cal. Date |
| EMI Test Receiver | Rohde & Schwarz | ESCI | 2011/02/02 | 2012/02/01 |
| LISN | EMCO | 3625/2 | 2011/03/01 | 2012/02/28 |
| LISN | Rohde & Schwarz | ESH2-Z5 | 2010/08/10 | 2011/08/09 |
| Climatic Condition | Ambient Temperature: <u>23</u> °C | | Relative Humidity: <u>58</u> %RH | |
| Power Supply System | AC Power : <u>230</u> Vac <u>50</u> Hz | | | |
| Test Set-up | Table-top Equipment | | | |

Test data see the next pages.

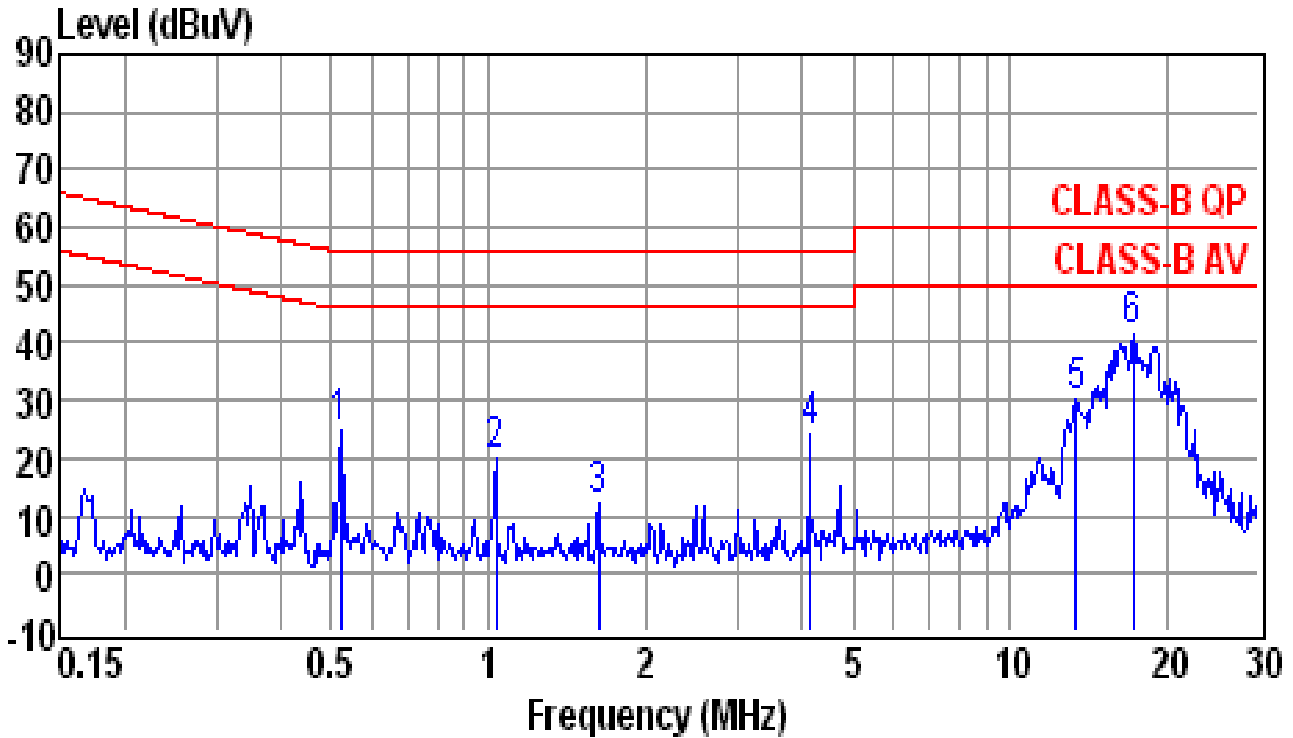


| | | | |
|-----------|----------------|--------------|--------------|
| Site | : conducted #1 | Date | : 05-23-2011 |
| Condition | : CLASS-B QP | LISN | : NEUTRAL |
| Tem / Hum | : 23 / 58% | Test Mode | : Audio-7 In |
| EUT | : AD-8 | Power Rating | : 230V/50Hz |

| Freq (MHz) | Reading (dBUV) | Factor (dB) | Emission Level (dBUV) | Limit Line (dBUV) | Over Limit (dB) | Remark |
|------------|----------------|-------------|-----------------------|-------------------|-----------------|--------|
| 0.5155 | 36.60 | 0.27 | 36.87 | 56.00 | -19.13 | QP |
| 1.0320 | 35.75 | 0.30 | 36.05 | 56.00 | -19.95 | QP |
| 2.0660 | 24.70 | 0.36 | 25.06 | 56.00 | -30.94 | QP |
| 3.6030 | 27.72 | 0.44 | 28.16 | 56.00 | -27.84 | QP |
| 17.1990 | 41.03 | 0.90 | 41.93 | 60.00 | -18.07 | QP |
| 19.0210 | 39.48 | 0.94 | 40.42 | 60.00 | -19.58 | QP |

Note :

1. Result = Reading + Factor
2. Factor = LISN Factor + Cable Loss



| | | | |
|-----------|----------------|--------------|--------------|
| Site | : conducted #1 | Date | : 05-23-2011 |
| Condition | : CLASS-B QP | LISN | : LINE |
| Tem / Hum | : 23 / 58% | Test Mode | : Audio-7 In |
| EUT | : AD-8 | Power Rating | : 230V/50Hz |

| Freq (MHz) | Reading (dBUV) | Factor (dB) | Emission Level (dBUV) | Limit Line (dBUV) | Over Limit (dB) | Remark |
|------------|----------------|-------------|-----------------------|-------------------|-----------------|--------|
| 0.5210 | 24.65 | 0.27 | 24.92 | 56.00 | -31.08 | QP |
| 1.0320 | 19.74 | 0.30 | 20.04 | 56.00 | -35.96 | QP |
| 1.6280 | 12.00 | 0.34 | 12.34 | 56.00 | -43.66 | QP |
| 4.1360 | 23.87 | 0.46 | 24.33 | 56.00 | -31.67 | QP |
| 13.4080 | 29.50 | 0.80 | 30.30 | 60.00 | -29.70 | QP |
| 17.1990 | 40.53 | 0.90 | 41.43 | 60.00 | -18.57 | QP |

Note :

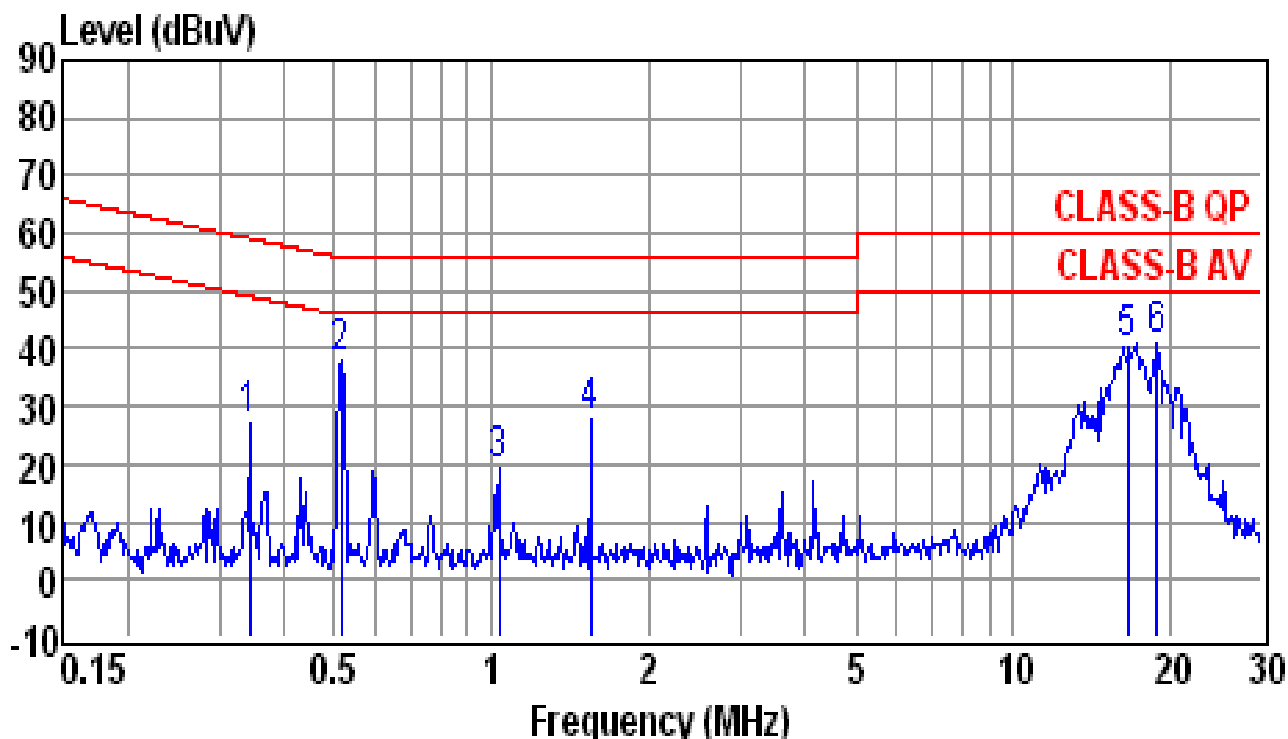
1. Result = Reading + Factor
2. Factor = LISN Factor + Cable Loss

8. Operating Conditions of The EUT : Audio-8 In

Test Date : May. 23, 2011

| | | | | |
|---------------------|---|-----------|----------------------------------|----------------|
| Test Specification | EN 55013:2001/A1:2003/A2:2006 (Class B) | | | |
| Equipment | Manufacturer | Model No. | Calibration Date | Next Cal. Date |
| EMI Test Receiver | Rohde & Schwarz | ESCI | 2011/02/02 | 2012/02/01 |
| LISN | EMCO | 3625/2 | 2011/03/01 | 2012/02/28 |
| LISN | Rohde & Schwarz | ESH2-Z5 | 2010/08/10 | 2011/08/09 |
| Climatic Condition | Ambient Temperature: <u>23</u> °C | | Relative Humidity: <u>58</u> %RH | |
| Power Supply System | AC Power : <u>230</u> Vac <u>50</u> Hz | | | |
| Test Set-up | Table-top Equipment | | | |

Test data see the next pages.

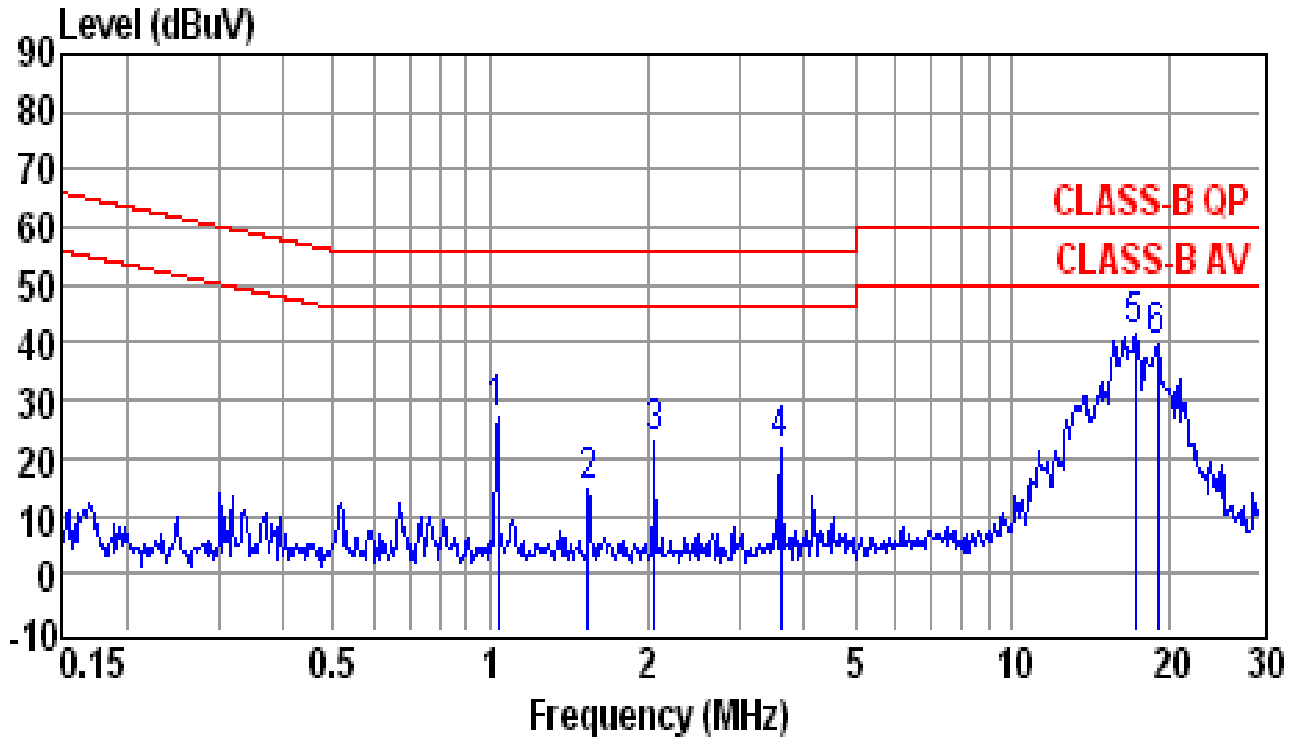


Site : conducted #1 Date : 05-23-2011
 Condition : CLASS-B QP LISN : NEUTRAL
 Tem / Hum : 23 / 58% Test Mode : Audio-8 In
 EUT : AD-8 Power Rating : 230V/50Hz

| Freq (MHz) | Reading (dBUV) | Factor (dB) | Emission Level (dBUV) | Limit Line (dBUV) | Over Limit (dB) | Remark |
|------------|----------------|-------------|-----------------------|-------------------|-----------------|--------|
| 0.3428 | 26.67 | 0.26 | 26.93 | 59.13 | -32.20 | QP |
| 0.5155 | 37.59 | 0.27 | 37.86 | 56.00 | -18.14 | QP |
| 1.0320 | 18.86 | 0.30 | 19.16 | 56.00 | -36.84 | QP |
| 1.5520 | 27.62 | 0.34 | 27.96 | 56.00 | -28.04 | QP |
| 16.6610 | 39.41 | 0.89 | 40.30 | 60.00 | -19.70 | QP |
| 18.9200 | 40.25 | 0.94 | 41.19 | 60.00 | -18.81 | QP |

Note :

1. Result = Reading + Factor
2. Factor = LISN Factor + Cable Loss



| | | | |
|-----------|----------------|--------------|--------------|
| Site | : conducted #1 | Date | : 05-23-2011 |
| Condition | : CLASS-B QP | LISN | : LINE |
| Tem / Hum | : 23 / 58% | Test Mode | : Audio-8 In |
| EUT | : AD-8 | Power Rating | : 230V/50Hz |

| Freq (MHz) | Reading (dBUV) | Factor (dB) | Emission Level (dBUV) | Limit Line (dBUV) | Over Limit (dB) | Remark |
|------------|----------------|-------------|-----------------------|-------------------|-----------------|--------|
| 1.0320 | 26.63 | 0.30 | 26.93 | 56.00 | -29.07 | QP |
| 1.5350 | 14.28 | 0.33 | 14.61 | 56.00 | -41.39 | QP |
| 2.0660 | 22.41 | 0.36 | 22.77 | 56.00 | -33.23 | QP |
| 3.6030 | 21.30 | 0.44 | 21.74 | 56.00 | -34.26 | QP |
| 17.1990 | 40.73 | 0.90 | 41.63 | 60.00 | -18.37 | QP |
| 19.0210 | 38.86 | 0.94 | 39.80 | 60.00 | -20.20 | QP |

Note :

1. Result = Reading + Factor
2. Factor = LISN Factor + Cable Loss

4.1.1.2 Conducted Emissions Test Setup Photos :



4.1.2 Radiated Emission Data(Absorbing Clamp)

4.1.2.1 Radiated Emissions (Absorbing Clamp) Test Date:

1. Operating Conditions of The EUT : POWER

Test Date : Jul. 21, 2011

| | | | | |
|---------------------|--|-----------|----------------------------------|----------------|
| Test Specification | EN 55013:2001/A1:2003/A2:2006 | | | |
| Equipment | Manufacturer | Model No. | Calibration Date | Next Cal. Date |
| LISN | EMCO | 3850/2 | 2011/05/05 | 2012/05/04 |
| Absorbing Clamp | Rohde & Schwarz | MDS-21 | 2011/05/13 | 2012/05/12 |
| EMI Test Receiver | Rohde & Schwarz | ESCI | 2011/02/02 | 2012/02/01 |
| Climatic Condition | Ambient Temperature: <u>26</u> °C | | Relative Humidity: <u>50</u> %RH | |
| Power Supply System | AC Power : <u>230</u> Vac <u>50</u> Hz | | | |
| Test Set-up | Table-top Equipment | | | |

| Emission Frequency (MHz) | Meter Reading (dBuV) | | CORR'd Factor (dB) | Results (dBpW/m) | | Limit (dBpW/m) | | Margins (dB) | |
|----------------------------|------------------------|------|----------------------|--------------------|------|------------------|------|----------------|------|
| | Q.P | AVG. | | Q.P | AVG. | Q.P | AVG. | Q.P | AVG. |
| 41.260 | 34.2 | ---- | 0.3 | 34.5 | ---- | 45.4 | 35.4 | -10.9 | ---- |
| 73.640 | 34.2 | ---- | 0.1 | 34.3 | ---- | 46.6 | 36.6 | -12.3 | ---- |
| 105.480 | 35.0 | ---- | -0.6 | 34.4 | ---- | 47.8 | 37.8 | -13.4 | ---- |
| 123.650 | 36.3 | ---- | -0.7 | 35.6 | ---- | 48.5 | 38.5 | -12.9 | ---- |
| 158.420 | 37.9 | ---- | -1.5 | 36.4 | ---- | 49.8 | 39.8 | -13.4 | ---- |
| 184.220 | 38.6 | ---- | -1.3 | 37.3 | ---- | 50.7 | 40.7 | -13.4 | ---- |

 Notes: 1) Place of Measurement: Measuring site of the ETC

2) Remark “----” means that the emissions level is too low to be measured.

3) The expanded uncertainty of the radiated emission tests is 3.53 dB.

2. Operating Conditions of The EUT : Source-1 Audio In

Test Date : Jul. 21, 2011

| | | | | |
|---|---|--------------------------|--|--|
| Test Specification | EN 55013:2001/A1:2003/A2:2006 | | | |
| Equipment | Manufacturer | Model No. | Calibration Date | Next Cal. Date |
| LISN Asorbing Clamp EMI Test Receiver | EMCO Rohde & Schwarz Rohde & Schwarz | 3850/2 MDS-21 ESCI | 2011/05/05 2011/05/13 2011/02/02 | 2012/05/04 2012/05/12 2012/02/01 |
| Climatic Condition | Ambient Temperature: <u>26</u> °C Relative Humidity: <u>50</u> %RH | | | |
| Power Supply System | AC Power : <u>230</u> Vac <u>50</u> Hz | | | |
| Test Set-up | Table-top Equipment | | | |

| Emission Frequency (MHz) | Meter Reading (dBuV) | | CORR'd Factor (dB) | Results (dBpW/m) | | Limit (dBpW/m) | | Margins (dB) | |
|----------------------------|------------------------|------|----------------------|--------------------|------|------------------|------|----------------|------|
| | Q.P | AVG. | | Q.P | AVG. | Q.P | AVG. | Q.P | AVG. |
| 68.350 | 33.5 | ---- | 0.3 | 33.8 | ---- | 46.4 | 36.4 | -12.6 | ---- |
| 94.570 | 35.2 | ---- | -0.5 | 34.7 | ---- | 47.4 | 37.4 | -12.7 | ---- |
| 136.270 | 36.9 | ---- | -0.5 | 36.4 | ---- | 48.9 | 38.9 | -12.5 | ---- |
| 174.540 | 37.9 | ---- | -1.4 | 36.5 | ---- | 50.4 | 40.4 | -13.9 | ---- |
| 196.580 | 40.2 | ---- | -1.2 | 39.0 | ---- | 51.2 | 41.2 | -12.2 | ---- |
| 206.570 | 39.9 | ---- | -1.4 | 38.5 | ---- | 51.5 | 41.5 | -13.0 | ---- |

 Notes: 1) Place of Measurement: Measuring site of the ETC

2) Remark “----“ means that the emissions level is too low to be measured.

3) The expanded uncertainty of the radiated emission tests is 3.53 dB.

3. Operating Conditions of The EUT : Source-2 Audio In

Test Date : Jul. 21, 2011

| | | | | |
|---|---|--------------------------|--|--|
| Test Specification | EN 55013:2001/A1:2003/A2:2006 | | | |
| Equipment | Manufacturer | Model No. | Calibration Date | Next Cal. Date |
| LISN Asorbing Clamp EMI Test Receiver | EMCO Rohde & Schwarz Rohde & Schwarz | 3850/2 MDS-21 ESCI | 2011/05/05 2011/05/13 2011/02/02 | 2012/05/04 2012/05/12 2012/02/01 |
| Climatic Condition | Ambient Temperature: <u>26</u> °C Relative Humidity: <u>50</u> %RH | | | |
| Power Supply System | AC Power : <u>230</u> Vac <u>50</u> Hz | | | |
| Test Set-up | Table-top Equipment | | | |

| Emission Frequency (MHz) | Meter Reading (dBuV) | | CORR'd Factor (dB) | Results (dBpW/m) | | Limit (dBpW/m) | | Margins (dB) | |
|----------------------------------|---------------------------|------|----------------------------|-----------------------|------|---------------------|------|-------------------|------|
| | Q.P | AVG. | | Q.P | AVG. | Q.P | AVG. | Q.P | AVG. |
| 62.170 | 34.8 | ---- | 0.2 | 35.0 | ---- | 46.2 | 36.2 | -11.2 | ---- |
| 85.240 | 35.9 | ---- | -0.4 | 35.5 | ---- | 47.0 | 37.0 | -11.5 | ---- |
| 117.480 | 37.4 | ---- | -0.7 | 36.7 | ---- | 48.2 | 38.2 | -11.5 | ---- |
| 136.520 | 36.7 | ---- | -0.5 | 36.2 | ---- | 48.9 | 38.9 | -12.7 | ---- |
| 172.550 | 38.2 | ---- | -1.4 | 36.8 | ---- | 50.3 | 40.3 | -13.5 | ---- |
| 193.640 | 37.9 | ---- | -1.2 | 36.7 | ---- | 51.1 | 41.1 | -14.4 | ---- |

 Notes: 1) Place of Measurement: Measuring site of the ETC

2) Remark “----“ means that the emissions level is too low to be measured.

3) The expanded uncertainty of the radiated emission tests is 3.53 dB.

4. Operating Conditions of The EUT : Source-3 Audio In

Test Date : Jul. 21, 2011

| | | | | |
|---|---|--------------------------|--|--|
| Test Specification | EN 55013:2001/A1:2003/A2:2006 | | | |
| Equipment | Manufacturer | Model No. | Calibration Date | Next Cal. Date |
| LISN Asorbing Clamp EMI Test Receiver | EMCO Rohde & Schwarz Rohde & Schwarz | 3850/2 MDS-21 ESCI | 2011/05/05 2011/05/13 2011/02/02 | 2012/05/04 2012/05/12 2012/02/01 |
| Climatic Condition | Ambient Temperature: <u>26</u> °C Relative Humidity: <u>50</u> %RH | | | |
| Power Supply System | AC Power : <u>230</u> Vac <u>50</u> Hz | | | |
| Test Set-up | Table-top Equipment | | | |

| Emission Frequency (MHz) | Meter Reading (dBuV) | | CORR'd Factor (dB) | Results (dBpW/m) | | Limit (dBpW/m) | | Margins (dB) | |
|----------------------------------|---------------------------|------|----------------------------|-----------------------|------|---------------------|------|-------------------|------|
| | Q.P | AVG. | | Q.P | AVG. | Q.P | AVG. | Q.P | AVG. |
| 51.970 | 34.2 | ---- | 0.3 | 34.5 | ---- | 45.8 | 35.8 | -11.3 | ---- |
| 93.420 | 36.3 | ---- | -0.5 | 35.8 | ---- | 47.3 | 37.3 | -11.5 | ---- |
| 107.490 | 35.8 | ---- | -0.6 | 35.2 | ---- | 47.9 | 37.9 | -12.7 | ---- |
| 136.840 | 37.8 | ---- | -0.5 | 37.3 | ---- | 49.0 | 39.0 | -11.7 | ---- |
| 152.790 | 37.1 | ---- | -1.1 | 36.0 | ---- | 49.5 | 39.5 | -13.5 | ---- |
| 193.270 | 40.2 | ---- | -1.2 | 39.0 | ---- | 51.0 | 41.0 | -12.0 | ---- |

 Notes: 1) Place of Measurement: Measuring site of the ETC

2) Remark “----“ means that the emissions level is too low to be measured.

3) The expanded uncertainty of the radiated emission tests is 3.53 dB.

5. Operating Conditions of The EUT : Source-4 Audio In

Test Date : Jul. 21, 2011

| | | | | |
|---|--|--------------------------|--|--|
| Test Specification | EN 55013:2001/A1:2003/A2:2006 | | | |
| Equipment | Manufacturer | Model No. | Calibration Date | Next Cal. Date |
| LISN Asorbing Clamp EMI Test Receiver | EMCO Rohde & Schwarz Rohde & Schwarz | 3850/2 MDS-21 ESCI | 2011/05/05 2011/05/13 2011/02/02 | 2012/05/04 2012/05/12 2012/02/01 |
| Climatic Condition | Ambient Temperature: <u>26</u> °C | | Relative Humidity: <u>50</u> %RH | |
| Power Supply System | AC Power : <u>230</u> Vac <u>50</u> Hz | | | |
| Test Set-up | Table-top Equipment | | | |

| Emission Frequency (MHz) | Meter Reading (dBuV) | | CORR'd Factor (dB) | Results (dBpW/m) | | Limit (dBpW/m) | | Margins (dB) | |
|----------------------------|------------------------|------|----------------------|--------------------|------|------------------|------|----------------|------|
| | Q.P | AVG. | | Q.P | AVG. | Q.P | AVG. | Q.P | AVG. |
| 86.530 | 34.2 | ---- | -0.4 | 33.8 | ---- | 47.1 | 37.1 | -13.3 | ---- |
| 93.470 | 36.0 | ---- | -0.5 | 35.5 | ---- | 47.4 | 37.4 | -11.9 | ---- |
| 112.380 | 37.5 | ---- | -0.6 | 36.9 | ---- | 48.1 | 38.1 | -11.2 | ---- |
| 138.270 | 38.5 | ---- | -0.4 | 38.1 | ---- | 49.0 | 39.0 | -10.9 | ---- |
| 163.680 | 37.8 | ---- | -1.5 | 36.3 | ---- | 50.0 | 40.0 | -13.7 | ---- |
| 185.540 | 40.2 | ---- | -1.3 | 38.9 | ---- | 50.8 | 40.8 | -11.9 | ---- |

 Notes: 1) Place of Measurement: Measuring site of the ETC

2) Remark “----“ means that the emissions level is too low to be measured.

3) The expanded uncertainty of the radiated emission tests is 3.53 dB.

6. Operating Conditions of The EUT : Source-5 Audio In

Test Date : Jul. 21, 2011

| | | | | |
|---|--|--------------------------|--|--|
| Test Specification | EN 55013:2001/A1:2003/A2:2006 | | | |
| Equipment | Manufacturer | Model No. | Calibration Date | Next Cal. Date |
| LISN Asorbing Clamp EMI Test Receiver | EMCO Rohde & Schwarz Rohde & Schwarz | 3850/2 MDS-21 ESCI | 2011/05/05 2011/05/13 2011/02/02 | 2012/05/04 2012/05/12 2012/02/01 |
| Climatic Condition | Ambient Temperature: <u>26</u> °C | | Relative Humidity: <u>50</u> %RH | |
| Power Supply System | AC Power : <u>230</u> Vac <u>50</u> Hz | | | |
| Test Set-up | Table-top Equipment | | | |

| Emission Frequency (MHz) | Meter Reading (dBuV) | | CORR'd Factor (dB) | Results (dBpW/m) | | Limit (dBpW/m) | | Margins (dB) | |
|----------------------------|------------------------|------|----------------------|--------------------|------|------------------|------|----------------|------|
| | Q.P | AVG. | | Q.P | AVG. | Q.P | AVG. | Q.P | AVG. |
| 74.690 | 34.1 | ---- | 0.0 | 34.1 | ---- | 46.7 | 36.7 | -12.6 | ---- |
| 92.150 | 35.6 | ---- | -0.4 | 35.2 | ---- | 47.3 | 37.3 | -12.1 | ---- |
| 106.370 | 35.2 | ---- | -0.6 | 34.6 | ---- | 47.8 | 37.8 | -13.2 | ---- |
| 135.480 | 37.5 | ---- | -0.5 | 37.0 | ---- | 48.9 | 38.9 | -11.9 | ---- |
| 162.560 | 37.9 | ---- | -1.5 | 36.4 | ---- | 49.9 | 39.9 | -13.5 | ---- |
| 193.640 | 40.3 | ---- | -1.2 | 39.1 | ---- | 51.1 | 41.1 | -12.0 | ---- |

 Notes: 1) Place of Measurement: Measuring site of the ETC

2) Remark “----“ means that the emissions level is too low to be measured.

3) The expanded uncertainty of the radiated emission tests is 3.53 dB.

7. Operating Conditions of The EUT : Source-6 Audio In

Test Date : Jul. 21, 2011

| | | | | |
|---|---|--------------------------|--|--|
| Test Specification | EN 55013:2001/A1:2003/A2:2006 | | | |
| Equipment | Manufacturer | Model No. | Calibration Date | Next Cal. Date |
| LISN Asorbing Clamp EMI Test Receiver | EMCO Rohde & Schwarz Rohde & Schwarz | 3850/2 MDS-21 ESCI | 2011/05/05 2011/05/13 2011/02/02 | 2012/05/04 2012/05/12 2012/02/01 |
| Climatic Condition | Ambient Temperature: <u>26</u> °C Relative Humidity: <u>50</u> %RH | | | |
| Power Supply System | AC Power : <u>230</u> Vac <u>50</u> Hz | | | |
| Test Set-up | Table-top Equipment | | | |

| Emission Frequency (MHz) | Meter Reading (dBuV) | | CORR'd Factor (dB) | Results (dBpW/m) | | Limit (dBpW/m) | | Margins (dB) | |
|----------------------------------|---------------------------|------|----------------------------|-----------------------|------|---------------------|------|-------------------|------|
| | Q.P | AVG. | | Q.P | AVG. | Q.P | AVG. | Q.P | AVG. |
| 73.110 | 35.6 | ---- | 0.1 | 35.7 | ---- | 46.6 | 36.6 | -10.9 | ---- |
| 96.570 | 34.2 | ---- | -0.5 | 33.7 | ---- | 47.5 | 37.5 | -13.8 | ---- |
| 105.760 | 36.0 | ---- | -0.6 | 35.4 | ---- | 47.8 | 37.8 | -12.4 | ---- |
| 133.240 | 37.5 | ---- | -0.5 | 37.0 | ---- | 48.8 | 38.8 | -11.8 | ---- |
| 169.570 | 38.6 | ---- | -1.5 | 37.1 | ---- | 50.2 | 40.2 | -13.1 | ---- |
| 176.280 | 37.9 | ---- | -1.4 | 36.5 | ---- | 50.4 | 40.4 | -13.9 | ---- |

 Notes: 1) Place of Measurement: Measuring site of the ETC

2) Remark "----" means that the emissions level is too low to be measured.

3) The expanded uncertainty of the radiated emission tests is 3.53 dB.

8. Operating Conditions of The EUT : Source-7 Audio In

Test Date : Jul. 21, 2011

| | | | | |
|---|---|--------------------------|--|--|
| Test Specification | EN 55013:2001/A1:2003/A2:2006 | | | |
| Equipment | Manufacturer | Model No. | Calibration Date | Next Cal. Date |
| LISN Asorbing Clamp EMI Test Receiver | EMCO Rohde & Schwarz Rohde & Schwarz | 3850/2 MDS-21 ESCI | 2011/05/05 2011/05/13 2011/02/02 | 2012/05/04 2012/05/12 2012/02/01 |
| Climatic Condition | Ambient Temperature: <u>26</u> °C Relative Humidity: <u>50</u> %RH | | | |
| Power Supply System | AC Power : <u>230</u> Vac <u>50</u> Hz | | | |
| Test Set-up | Table-top Equipment | | | |

| Emission Frequency (MHz) | Meter Reading (dBuV) | | CORR'd Factor (dB) | Results (dBpW/m) | | Limit (dBpW/m) | | Margins (dB) | |
|----------------------------|------------------------|------|----------------------|--------------------|------|------------------|------|----------------|------|
| | Q.P | AVG. | | Q.P | AVG. | Q.P | AVG. | Q.P | AVG. |
| 98.670 | 35.0 | ---- | -0.5 | 34.5 | ---- | 47.5 | 37.5 | -13.0 | ---- |
| 109.840 | 36.3 | ---- | -0.6 | 35.7 | ---- | 48.0 | 38.0 | -12.3 | ---- |
| 117.860 | 37.5 | ---- | -0.7 | 36.8 | ---- | 48.3 | 38.3 | -11.5 | ---- |
| 129.330 | 35.5 | ---- | -0.6 | 34.9 | ---- | 48.7 | 38.7 | -13.8 | ---- |
| 163.890 | 39.0 | ---- | -1.5 | 37.5 | ---- | 50.0 | 40.0 | -12.5 | ---- |
| 181.450 | 37.9 | ---- | -1.3 | 36.6 | ---- | 50.6 | 40.6 | -14.0 | ---- |

 Notes: 1) Place of Measurement: Measuring site of the ETC

2) Remark “----“ means that the emissions level is too low to be measured.

3) The expanded uncertainty of the radiated emission tests is 3.53 dB.

9. Operating Conditions of The EUT : Source-8 Audio In

Test Date : Jul. 21, 2011

| | | | | |
|---|--|--------------------------|--|--|
| Test Specification | EN 55013:2001/A1:2003/A2:2006 | | | |
| Equipment | Manufacturer | Model No. | Calibration Date | Next Cal. Date |
| LISN Asorbing Clamp EMI Test Receiver | EMCO Rohde & Schwarz Rohde & Schwarz | 3850/2 MDS-21 ESCI | 2011/05/05 2011/05/13 2011/02/02 | 2012/05/04 2012/05/12 2012/02/01 |
| Climatic Condition | Ambient Temperature: <u>26</u> °C | | Relative Humidity: <u>50</u> %RH | |
| Power Supply System | AC Power : <u>230</u> Vac <u>50</u> Hz | | | |
| Test Set-up | Table-top Equipment | | | |

| Emission Frequency (MHz) | Meter Reading (dBuV) | | CORR'd Factor (dB) | Results (dBpW/m) | | Limit (dBpW/m) | | Margins (dB) | |
|----------------------------|------------------------|------|----------------------|--------------------|------|------------------|------|----------------|------|
| | Q.P | AVG. | | Q.P | AVG. | Q.P | AVG. | Q.P | AVG. |
| 104.750 | 35.9 | ---- | -0.6 | 35.3 | ---- | 47.8 | 37.8 | -12.5 | ---- |
| 129.640 | 37.1 | ---- | -0.6 | 36.5 | ---- | 48.7 | 38.7 | -12.2 | ---- |
| 142.750 | 36.9 | ---- | -0.5 | 36.4 | ---- | 49.2 | 39.2 | -12.8 | ---- |
| 180.310 | 37.8 | ---- | -1.3 | 36.5 | ---- | 50.6 | 40.6 | -14.1 | ---- |
| 193.620 | 40.2 | ---- | -1.2 | 39.0 | ---- | 51.1 | 41.1 | -12.1 | ---- |
| 215.480 | 41.2 | ---- | -1.7 | 39.5 | ---- | 51.9 | 41.9 | -12.4 | ---- |

 Notes: 1) Place of Measurement: Measuring site of the ETC

2) Remark “----“ means that the emissions level is too low to be measured.

3) The expanded uncertainty of the radiated emission tests is 3.53 dB.

10. Operating Conditions of The EUT : Source-1 Audio Out

Test Date : Jul. 21, 2011

| | | | | |
|---|---|--------------------------|--|--|
| Test Specification | EN 55013:2001/A1:2003/A2:2006 | | | |
| Equipment | Manufacturer | Model No. | Calibration Date | Next Cal. Date |
| LISN Asorbing Clamp EMI Test Receiver | EMCO Rohde & Schwarz Rohde & Schwarz | 3850/2 MDS-21 ESCI | 2011/05/05 2011/05/13 2011/02/02 | 2012/05/04 2012/05/12 2012/02/01 |
| Climatic Condition | Ambient Temperature: <u>26</u> °C Relative Humidity: <u>50</u> %RH | | | |
| Power Supply System | AC Power : <u>230</u> Vac <u>50</u> Hz | | | |
| Test Set-up | Table-top Equipment | | | |

| Emission Frequency (MHz) | Meter Reading (dBuV) | | CORR'd Factor (dB) | Results (dBpW/m) | | Limit (dBpW/m) | | Margins (dB) | |
|----------------------------|------------------------|------|----------------------|--------------------|------|------------------|------|----------------|------|
| | Q.P | AVG. | | Q.P | AVG. | Q.P | AVG. | Q.P | AVG. |
| 57.110 | 35.0 | ---- | 0.2 | 35.2 | ---- | 46.0 | 36.0 | -10.8 | ---- |
| 106.870 | 37.4 | ---- | -0.6 | 36.8 | ---- | 47.8 | 37.8 | -11.0 | ---- |
| 137.280 | 38.6 | ---- | -0.4 | 38.2 | ---- | 49.0 | 39.0 | -10.8 | ---- |
| 161.110 | 40.2 | ---- | -1.6 | 38.6 | ---- | 49.9 | 39.9 | -11.3 | ---- |
| 174.560 | 36.2 | ---- | -1.4 | 34.8 | ---- | 50.4 | 40.4 | -15.6 | ---- |
| 205.410 | 40.2 | ---- | -1.3 | 38.9 | ---- | 51.5 | 41.5 | -12.6 | ---- |

- Notes: 1) Place of Measurement: Measuring site of the ETC
- 2) Remark “----“ means that the emissions level is too low to be measured.
- 3) The expanded uncertainty of the radiated emission tests is 3.53 dB.

11. Operating Conditions of The EUT : Source-2 Audio Out

Test Date : Jul. 21, 2011

| | | | | |
|---|---|--------------------------|--|--|
| Test Specification | EN 55013:2001/A1:2003/A2:2006 | | | |
| Equipment | Manufacturer | Model No. | Calibration Date | Next Cal. Date |
| LISN Asorbing Clamp EMI Test Receiver | EMCO Rohde & Schwarz Rohde & Schwarz | 3850/2 MDS-21 ESCI | 2011/05/05 2011/05/13 2011/02/02 | 2012/05/04 2012/05/12 2012/02/01 |
| Climatic Condition | Ambient Temperature: <u>26</u> °C Relative Humidity: <u>50</u> %RH | | | |
| Power Supply System | AC Power : <u>230</u> Vac <u>50</u> Hz | | | |
| Test Set-up | Table-top Equipment | | | |

| Emission Frequency (MHz) | Meter Reading (dBuV) | | CORR'd Factor (dB) | Results (dBpW/m) | | Limit (dBpW/m) | | Margins (dB) | |
|----------------------------------|---------------------------|------|----------------------------|-----------------------|------|---------------------|------|-------------------|------|
| | Q.P | AVG. | | Q.P | AVG. | Q.P | AVG. | Q.P | AVG. |
| 79.520 | 34.0 | ---- | -0.4 | 33.6 | ---- | 46.8 | 36.8 | -13.2 | ---- |
| 114.280 | 37.9 | ---- | -0.7 | 37.2 | ---- | 48.1 | 38.1 | -10.9 | ---- |
| 136.690 | 40.5 | 30.8 | -0.5 | 40.0 | 30.3 | 49.0 | 39.0 | -9.0 | -8.7 |
| 174.110 | 37.5 | ---- | -1.4 | 36.1 | ---- | 50.3 | 40.3 | -14.2 | ---- |
| 192.370 | 40.2 | ---- | -1.2 | 39.0 | ---- | 51.0 | 41.0 | -12.0 | ---- |
| 237.580 | 39.3 | ---- | -1.9 | 37.4 | ---- | 52.7 | 42.7 | -15.3 | ---- |

 Notes: 1) Place of Measurement: Measuring site of the ETC

2) Remark “----“ means that the emissions level is too low to be measured.

3) The expanded uncertainty of the radiated emission tests is 3.53 dB.

12. Operating Conditions of The EUT : Source-3 Audio Out

Test Date : Jul. 21, 2011

| | | | | |
|---|---|--------------------------|--|--|
| Test Specification | EN 55013:2001/A1:2003/A2:2006 | | | |
| Equipment | Manufacturer | Model No. | Calibration Date | Next Cal. Date |
| LISN Asorbing Clamp EMI Test Receiver | EMCO Rohde & Schwarz Rohde & Schwarz | 3850/2 MDS-21 ESCI | 2011/05/05 2011/05/13 2011/02/02 | 2012/05/04 2012/05/12 2012/02/01 |
| Climatic Condition | Ambient Temperature: <u>26</u> °C Relative Humidity: <u>50</u> %RH | | | |
| Power Supply System | AC Power : <u>230</u> Vac <u>50</u> Hz | | | |
| Test Set-up | Table-top Equipment | | | |

| Emission Frequency (MHz) | Meter Reading (dBuV) | | CORR'd Factor (dB) | Results (dBpW/m) | | Limit (dBpW/m) | | Margins (dB) | |
|----------------------------|------------------------|------|----------------------|--------------------|------|------------------|------|----------------|------|
| | Q.P | AVG. | | Q.P | AVG. | Q.P | AVG. | Q.P | AVG. |
| 81.020 | 34.3 | ---- | -0.4 | 33.9 | ---- | 46.9 | 36.9 | -13.0 | ---- |
| 109.340 | 36.3 | ---- | -0.6 | 35.7 | ---- | 47.9 | 37.9 | -12.2 | ---- |
| 126.570 | 36.8 | ---- | -0.6 | 36.2 | ---- | 48.6 | 38.6 | -12.4 | ---- |
| 162.110 | 37.2 | ---- | -1.5 | 35.7 | ---- | 49.9 | 39.9 | -14.2 | ---- |
| 189.680 | 37.9 | ---- | -1.2 | 36.7 | ---- | 50.9 | 40.9 | -14.2 | ---- |
| 206.370 | 39.3 | ---- | -1.4 | 37.9 | ---- | 51.5 | 41.5 | -13.6 | ---- |

- Notes: 1) Place of Measurement: Measuring site of the ETC
- 2) Remark “----“ means that the emissions level is too low to be measured.
- 3) The expanded uncertainty of the radiated emission tests is 3.53 dB.

13. Operating Conditions of The EUT : Source-4 Audio Out

Test Date : Jul. 21, 2011

| | | | | |
|---|--|--------------------------|--|--|
| Test Specification | EN 55013:2001/A1:2003/A2:2006 | | | |
| Equipment | Manufacturer | Model No. | Calibration Date | Next Cal. Date |
| LISN Asorbing Clamp EMI Test Receiver | EMCO Rohde & Schwarz Rohde & Schwarz | 3850/2 MDS-21 ESCI | 2011/05/05 2011/05/13 2011/02/02 | 2012/05/04 2012/05/12 2012/02/01 |
| Climatic Condition | Ambient Temperature: <u>26</u> °C | | Relative Humidity: <u>50</u> %RH | |
| Power Supply System | AC Power : <u>230</u> Vac <u>50</u> Hz | | | |
| Test Set-up | Table-top Equipment | | | |

| Emission Frequency (MHz) | Meter Reading (dBuV) | | CORR'd Factor (dB) | Results (dBpW/m) | | Limit (dBpW/m) | | Margins (dB) | |
|----------------------------|------------------------|------|----------------------|--------------------|------|------------------|------|----------------|------|
| | Q.P | AVG. | | Q.P | AVG. | Q.P | AVG. | Q.P | AVG. |
| 49.310 | 33.1 | ---- | 0.3 | 33.4 | ---- | 45.7 | 35.7 | -12.3 | ---- |
| 83.610 | 35.9 | ---- | -0.4 | 35.5 | ---- | 47.0 | 37.0 | -11.5 | ---- |
| 117.410 | 37.2 | ---- | -0.7 | 36.5 | ---- | 48.2 | 38.2 | -11.7 | ---- |
| 152.330 | 40.2 | ---- | -1.1 | 39.1 | ---- | 49.5 | 39.5 | -10.4 | ---- |
| 193.740 | 41.2 | ---- | -1.2 | 40.0 | ---- | 51.1 | 41.1 | -11.1 | ---- |
| 217.530 | 40.6 | ---- | -1.8 | 38.8 | ---- | 51.9 | 41.9 | -13.1 | ---- |

 Notes: 1) Place of Measurement: Measuring site of the ETC

2) Remark “----“ means that the emissions level is too low to be measured.

3) The expanded uncertainty of the radiated emission tests is 3.53 dB.

14. Operating Conditions of The EUT : Source-5 Audio Out

Test Date : Jul. 21, 2011

| | | | | |
|---|--|--------------------------|--|--|
| Test Specification | EN 55013:2001/A1:2003/A2:2006 | | | |
| Equipment | Manufacturer | Model No. | Calibration Date | Next Cal. Date |
| LISN Asorbing Clamp EMI Test Receiver | EMCO Rohde & Schwarz Rohde & Schwarz | 3850/2 MDS-21 ESCI | 2011/05/05 2011/05/13 2011/02/02 | 2012/05/04 2012/05/12 2012/02/01 |
| Climatic Condition | Ambient Temperature: <u>26</u> °C | | Relative Humidity: <u>50</u> %RH | |
| Power Supply System | AC Power : <u>230</u> Vac <u>50</u> Hz | | | |
| Test Set-up | Table-top Equipment | | | |

| Emission Frequency (MHz) | Meter Reading (dBuV) | | CORR'd Factor (dB) | Results (dBpW/m) | | Limit (dBpW/m) | | Margins (dB) | |
|----------------------------|------------------------|------|----------------------|--------------------|------|------------------|------|----------------|------|
| | Q.P | AVG. | | Q.P | AVG. | Q.P | AVG. | Q.P | AVG. |
| 73.110 | 35.2 | ---- | 0.1 | 35.3 | ---- | 46.6 | 36.6 | -11.3 | ---- |
| 127.190 | 37.2 | ---- | -0.6 | 36.6 | ---- | 48.6 | 38.6 | -12.0 | ---- |
| 142.870 | 34.5 | ---- | -0.5 | 34.0 | ---- | 49.2 | 39.2 | -15.2 | ---- |
| 193.260 | 40.2 | ---- | -1.2 | 39.0 | ---- | 51.0 | 41.0 | -12.0 | ---- |
| 207.810 | 38.4 | ---- | -1.4 | 37.0 | ---- | 51.6 | 41.6 | -14.6 | ---- |
| 226.340 | 39.3 | ---- | -1.9 | 37.4 | ---- | 52.3 | 42.3 | -14.9 | ---- |

 Notes: 1) Place of Measurement: Measuring site of the ETC

2) Remark “----“ means that the emissions level is too low to be measured.

3) The expanded uncertainty of the radiated emission tests is 3.53 dB.

15. Operating Conditions of The EUT : Source-6 Audio Out

Test Date : Jul. 21, 2011

| | | | | |
|---|--|--------------------------|--|--|
| Test Specification | EN 55013:2001/A1:2003/A2:2006 | | | |
| Equipment | Manufacturer | Model No. | Calibration Date | Next Cal. Date |
| LISN Asorbing Clamp EMI Test Receiver | EMCO Rohde & Schwarz Rohde & Schwarz | 3850/2 MDS-21 ESCI | 2011/05/05 2011/05/13 2011/02/02 | 2012/05/04 2012/05/12 2012/02/01 |
| Climatic Condition | Ambient Temperature: <u>26</u> °C | | Relative Humidity: <u>50</u> %RH | |
| Power Supply System | AC Power : <u>230</u> Vac <u>50</u> Hz | | | |
| Test Set-up | Table-top Equipment | | | |

| Emission Frequency (MHz) | Meter Reading (dBuV) | | CORR'd Factor (dB) | Results (dBpW/m) | | Limit (dBpW/m) | | Margins (dB) | |
|----------------------------|------------------------|------|----------------------|--------------------|------|------------------|------|----------------|------|
| | Q.P | AVG. | | Q.P | AVG. | Q.P | AVG. | Q.P | AVG. |
| 117.140 | 35.1 | ---- | -0.7 | 34.4 | ---- | 48.2 | 38.2 | -13.8 | ---- |
| 135.210 | 37.6 | ---- | -0.5 | 37.1 | ---- | 48.9 | 38.9 | -11.8 | ---- |
| 168.420 | 38.1 | ---- | -1.5 | 36.6 | ---- | 50.1 | 40.1 | -13.5 | ---- |
| 184.750 | 37.6 | ---- | -1.3 | 36.3 | ---- | 50.7 | 40.7 | -14.4 | ---- |
| 215.480 | 40.5 | ---- | -1.7 | 38.8 | ---- | 51.9 | 41.9 | -13.1 | ---- |
| 249.630 | 44.2 | ---- | -2.0 | 42.2 | ---- | 53.1 | 43.1 | -10.9 | ---- |

 Notes: 1) Place of Measurement: Measuring site of the ETC

2) Remark “----“ means that the emissions level is too low to be measured.

3) The expanded uncertainty of the radiated emission tests is 3.53 dB.

16. Operating Conditions of The EUT : Source-7 Audio Out

Test Date : Jul. 21, 2011

| | | | | |
|---|---|--------------------------|--|--|
| Test Specification | EN 55013:2001/A1:2003/A2:2006 | | | |
| Equipment | Manufacturer | Model No. | Calibration Date | Next Cal. Date |
| LISN Asorbing Clamp EMI Test Receiver | EMCO Rohde & Schwarz Rohde & Schwarz | 3850/2 MDS-21 ESCI | 2011/05/05 2011/05/13 2011/02/02 | 2012/05/04 2012/05/12 2012/02/01 |
| Climatic Condition | Ambient Temperature: <u>26</u> °C Relative Humidity: <u>50</u> %RH | | | |
| Power Supply System | AC Power : <u>230</u> Vac <u>50</u> Hz | | | |
| Test Set-up | Table-top Equipment | | | |

| Emission Frequency (MHz) | Meter Reading (dBuV) | | CORR'd Factor (dB) | Results (dBpW/m) | | Limit (dBpW/m) | | Margins (dB) | |
|----------------------------|------------------------|------|----------------------|--------------------|------|------------------|------|----------------|------|
| | Q.P | AVG. | | Q.P | AVG. | Q.P | AVG. | Q.P | AVG. |
| 71.340 | 35.4 | ---- | 0.2 | 35.6 | ---- | 46.5 | 36.5 | -10.9 | ---- |
| 93.170 | 36.3 | ---- | -0.5 | 35.8 | ---- | 47.3 | 37.3 | -11.5 | ---- |
| 106.320 | 35.8 | ---- | -0.6 | 35.2 | ---- | 47.8 | 37.8 | -12.6 | ---- |
| 134.870 | 37.1 | ---- | -0.5 | 36.6 | ---- | 48.9 | 38.9 | -12.3 | ---- |
| 152.350 | 37.6 | ---- | -1.1 | 36.5 | ---- | 49.5 | 39.5 | -13.0 | ---- |
| 198.470 | 40.2 | ---- | -1.1 | 39.1 | ---- | 51.2 | 41.2 | -12.1 | ---- |

 Notes: 1) Place of Measurement: Measuring site of the ETC

2) Remark “----“ means that the emissions level is too low to be measured.

3) The expanded uncertainty of the radiated emission tests is 3.53 dB.

17. Operating Conditions of The EUT : Source-8 Audio Out

Test Date : Jul. 21, 2011

| | | | | |
|---|--|--------------------------|--|--|
| Test Specification | EN 55013:2001/A1:2003/A2:2006 | | | |
| Equipment | Manufacturer | Model No. | Calibration Date | Next Cal. Date |
| LISN Asorbing Clamp EMI Test Receiver | EMCO Rohde & Schwarz Rohde & Schwarz | 3850/2 MDS-21 ESCI | 2011/05/05 2011/05/13 2011/02/02 | 2012/05/04 2012/05/12 2012/02/01 |
| Climatic Condition | Ambient Temperature: <u>26</u> °C | | Relative Humidity: <u>50</u> %RH | |
| Power Supply System | AC Power : <u>230</u> Vac <u>50</u> Hz | | | |
| Test Set-up | Table-top Equipment | | | |

| Emission Frequency (MHz) | Meter Reading (dBuV) | | CORR'd Factor (dB) | Results (dBpW/m) | | Limit (dBpW/m) | | Margins (dB) | |
|----------------------------|------------------------|------|----------------------|--------------------|------|------------------|------|----------------|------|
| | Q.P | AVG. | | Q.P | AVG. | Q.P | AVG. | Q.P | AVG. |
| 73.640 | 34.2 | ---- | 0.1 | 34.3 | ---- | 46.6 | 36.6 | -12.3 | ---- |
| 96.390 | 38.5 | 29.3 | -0.5 | 38.0 | 28.8 | 47.5 | 37.5 | -9.5 | -8.7 |
| 115.270 | 35.2 | ---- | -0.7 | 34.5 | ---- | 48.2 | 38.2 | -13.7 | ---- |
| 136.590 | 37.5 | ---- | -0.5 | 37.0 | ---- | 48.9 | 38.9 | -11.9 | ---- |
| 172.480 | 39.6 | ---- | -1.4 | 38.2 | ---- | 50.3 | 40.3 | -12.1 | ---- |
| 193.650 | 41.2 | ---- | -1.2 | 40.0 | ---- | 51.1 | 41.1 | -11.1 | ---- |

 Notes: 1) Place of Measurement: Measuring site of the ETC

2) Remark “----“ means that the emissions level is too low to be measured.

3) The expanded uncertainty of the radiated emission tests is 3.53 dB.

18. Operating Conditions of The EUT : Zone-1 Audio Out

Test Date : Jul. 21, 2011

| | | | | |
|---|--|--------------------------|--|--|
| Test Specification | EN 55013:2001/A1:2003/A2:2006 | | | |
| Equipment | Manufacturer | Model No. | Calibration Date | Next Cal. Date |
| LISN Asorbing Clamp EMI Test Receiver | EMCO Rohde & Schwarz Rohde & Schwarz | 3850/2 MDS-21 ESCI | 2011/05/05 2011/05/13 2011/02/02 | 2012/05/04 2012/05/12 2012/02/01 |
| Climatic Condition | Ambient Temperature: <u>26</u> °C | | Relative Humidity: <u>50</u> %RH | |
| Power Supply System | AC Power : <u>230</u> Vac <u>50</u> Hz | | | |
| Test Set-up | Table-top Equipment | | | |

| Emission Frequency (MHz) | Meter Reading (dBuV) | | CORR'd Factor (dB) | Results (dBpW/m) | | Limit (dBpW/m) | | Margins (dB) | |
|----------------------------|------------------------|------|----------------------|--------------------|------|------------------|------|----------------|------|
| | Q.P | AVG. | | Q.P | AVG. | Q.P | AVG. | Q.P | AVG. |
| 47.310 | 36.5 | 26.4 | 0.3 | 36.8 | 26.7 | 45.6 | 35.6 | -8.8 | -8.9 |
| 62.480 | 35.2 | ---- | 0.2 | 35.4 | ---- | 46.2 | 36.2 | -10.8 | ---- |
| 92.340 | 38.3 | 29.3 | -0.5 | 37.8 | 28.8 | 47.3 | 37.3 | -9.5 | -8.5 |
| 106.470 | 36.2 | ---- | -0.6 | 35.6 | ---- | 47.8 | 37.8 | -12.2 | ---- |
| 132.250 | 38.6 | ---- | -0.5 | 38.1 | ---- | 48.8 | 38.8 | -10.7 | ---- |
| 148.790 | 38.6 | ---- | -0.9 | 37.7 | ---- | 49.4 | 39.4 | -11.7 | ---- |

 Notes: 1) Place of Measurement: Measuring site of the ETC

2) Remark “----“ means that the emissions level is too low to be measured.

3) The expanded uncertainty of the radiated emission tests is 3.53 dB.

19. Operating Conditions of The EUT : Zone-2 Audio Out

Test Date : Jul. 21, 2011

| | | | | |
|---|---|--------------------------|--|--|
| Test Specification | EN 55013:2001/A1:2003/A2:2006 | | | |
| Equipment | Manufacturer | Model No. | Calibration Date | Next Cal. Date |
| LISN Asorbing Clamp EMI Test Receiver | EMCO Rohde & Schwarz Rohde & Schwarz | 3850/2 MDS-21 ESCI | 2011/05/05 2011/05/13 2011/02/02 | 2012/05/04 2012/05/12 2012/02/01 |
| Climatic Condition | Ambient Temperature: <u>26</u> °C Relative Humidity: <u>50</u> %RH | | | |
| Power Supply System | AC Power : <u>230</u> Vac <u>50</u> Hz | | | |
| Test Set-up | Table-top Equipment | | | |

| Emission Frequency (MHz) | Meter Reading (dBuV) | | CORR'd Factor (dB) | Results (dBpW/m) | | Limit (dBpW/m) | | Margins (dB) | |
|----------------------------------|---------------------------|------|----------------------------|-----------------------|------|---------------------|------|-------------------|------|
| | Q.P | AVG. | | Q.P | AVG. | Q.P | AVG. | Q.P | AVG. |
| 69.230 | 35.2 | ---- | 0.3 | 35.5 | ---- | 46.5 | 36.5 | -11.0 | ---- |
| 86.310 | 34.9 | ---- | -0.4 | 34.5 | ---- | 47.1 | 37.1 | -12.6 | ---- |
| 127.540 | 38.0 | ---- | -0.6 | 37.4 | ---- | 48.6 | 38.6 | -11.2 | ---- |
| 148.690 | 37.6 | ---- | -0.9 | 36.7 | ---- | 49.4 | 39.4 | -12.7 | ---- |
| 162.830 | 34.5 | ---- | -1.5 | 33.0 | ---- | 49.9 | 39.9 | -16.9 | ---- |
| 189.740 | 38.3 | ---- | -1.2 | 37.1 | ---- | 50.9 | 40.9 | -13.8 | ---- |

 Notes: 1) Place of Measurement: Measuring site of the ETC

2) Remark “----“ means that the emissions level is too low to be measured.

3) The expanded uncertainty of the radiated emission tests is 3.53 dB.

20. Operating Conditions of The EUT : Zone-3 Audio Out

Test Date : Jul. 21, 2011

| | | | | |
|---|---|--------------------------|--|--|
| Test Specification | EN 55013:2001/A1:2003/A2:2006 | | | |
| Equipment | Manufacturer | Model No. | Calibration Date | Next Cal. Date |
| LISN Asorbing Clamp EMI Test Receiver | EMCO Rohde & Schwarz Rohde & Schwarz | 3850/2 MDS-21 ESCI | 2011/05/05 2011/05/13 2011/02/02 | 2012/05/04 2012/05/12 2012/02/01 |
| Climatic Condition | Ambient Temperature: <u>26</u> °C Relative Humidity: <u>50</u> %RH | | | |
| Power Supply System | AC Power : <u>230</u> Vac <u>50</u> Hz | | | |
| Test Set-up | Table-top Equipment | | | |

| Emission Frequency (MHz) | Meter Reading (dBuV) | | CORR'd Factor (dB) | Results (dBpW/m) | | Limit (dBpW/m) | | Margins (dB) | |
|----------------------------------|---------------------------|------|----------------------------|-----------------------|------|---------------------|------|-------------------|------|
| | Q.P | AVG. | | Q.P | AVG. | Q.P | AVG. | Q.P | AVG. |
| 74.110 | 33.4 | ---- | 0.0 | 33.4 | ---- | 46.6 | 36.6 | -13.2 | ---- |
| 147.680 | 37.6 | ---- | -0.8 | 36.8 | ---- | 49.4 | 39.4 | -12.6 | ---- |
| 163.550 | 38.6 | ---- | -1.5 | 37.1 | ---- | 49.9 | 39.9 | -12.8 | ---- |
| 198.680 | 40.5 | ---- | -1.1 | 39.4 | ---- | 51.2 | 41.2 | -11.8 | ---- |
| 206.340 | 42.7 | ---- | -1.4 | 41.3 | ---- | 51.5 | 41.5 | -10.2 | ---- |
| 221.150 | 41.6 | ---- | -1.9 | 39.7 | ---- | 52.1 | 42.1 | -12.4 | ---- |

 Notes: 1) Place of Measurement: Measuring site of the ETC

2) Remark “----“ means that the emissions level is too low to be measured.

3) The expanded uncertainty of the radiated emission tests is 3.53 dB.

21. Operating Conditions of The EUT : Zone-4 Audio Out

Test Date : Jul. 21, 2011

| | | | | |
|---|---|--------------------------|--|--|
| Test Specification | EN 55013:2001/A1:2003/A2:2006 | | | |
| Equipment | Manufacturer | Model No. | Calibration Date | Next Cal. Date |
| LISN Asorbing Clamp EMI Test Receiver | EMCO Rohde & Schwarz Rohde & Schwarz | 3850/2 MDS-21 ESCI | 2011/05/05 2011/05/13 2011/02/02 | 2012/05/04 2012/05/12 2012/02/01 |
| Climatic Condition | Ambient Temperature: <u>26</u> °C Relative Humidity: <u>50</u> %RH | | | |
| Power Supply System | AC Power : <u>230</u> Vac <u>50</u> Hz | | | |
| Test Set-up | Table-top Equipment | | | |

| Emission Frequency (MHz) | Meter Reading (dBuV) | | CORR'd Factor (dB) | Results (dBpW/m) | | Limit (dBpW/m) | | Margins (dB) | |
|----------------------------------|---------------------------|------|----------------------------|-----------------------|------|---------------------|------|-------------------|------|
| | Q.P | AVG. | | Q.P | AVG. | Q.P | AVG. | Q.P | AVG. |
| 89.340 | 34.1 | ---- | -0.4 | 33.7 | ---- | 47.2 | 37.2 | -13.5 | ---- |
| 136.250 | 37.6 | ---- | -0.5 | 37.1 | ---- | 48.9 | 38.9 | -11.8 | ---- |
| 158.470 | 35.2 | ---- | -1.5 | 33.7 | ---- | 49.8 | 39.8 | -16.1 | ---- |
| 198.360 | 40.6 | ---- | -1.1 | 39.5 | ---- | 51.2 | 41.2 | -11.7 | ---- |
| 224.750 | 41.8 | ---- | -1.9 | 39.9 | ---- | 52.2 | 42.2 | -12.3 | ---- |
| 241.390 | 40.7 | ---- | -1.9 | 38.8 | ---- | 52.8 | 42.8 | -14.0 | ---- |

- Notes: 1) Place of Measurement: Measuring site of the ETC
- 2) Remark “----“ means that the emissions level is too low to be measured.
- 3) The expanded uncertainty of the radiated emission tests is 3.53 dB.

22. Operating Conditions of The EUT : Zone-5 Audio Out

Test Date : Jul. 21, 2011

| | | | | |
|---|---|--------------------------|--|--|
| Test Specification | EN 55013:2001/A1:2003/A2:2006 | | | |
| Equipment | Manufacturer | Model No. | Calibration Date | Next Cal. Date |
| LISN Asorbing Clamp EMI Test Receiver | EMCO Rohde & Schwarz Rohde & Schwarz | 3850/2 MDS-21 ESCI | 2011/05/05 2011/05/13 2011/02/02 | 2012/05/04 2012/05/12 2012/02/01 |
| Climatic Condition | Ambient Temperature: <u>26</u> °C Relative Humidity: <u>50</u> %RH | | | |
| Power Supply System | AC Power : <u>230</u> Vac <u>50</u> Hz | | | |
| Test Set-up | Table-top Equipment | | | |

| Emission Frequency (MHz) | Meter Reading (dBuV) | | CORR'd Factor (dB) | Results (dBpW/m) | | Limit (dBpW/m) | | Margins (dB) | |
|----------------------------|------------------------|------|----------------------|--------------------|------|------------------|------|----------------|------|
| | Q.P | AVG. | | Q.P | AVG. | Q.P | AVG. | Q.P | AVG. |
| 53.690 | 33.1 | ---- | 0.3 | 33.4 | ---- | 45.9 | 35.9 | -12.5 | ---- |
| 108.540 | 35.9 | ---- | -0.6 | 35.3 | ---- | 47.9 | 37.9 | -12.6 | ---- |
| 135.260 | 34.2 | ---- | -0.5 | 33.7 | ---- | 48.9 | 38.9 | -15.2 | ---- |
| 182.160 | 38.7 | ---- | -1.3 | 37.4 | ---- | 50.6 | 40.6 | -13.2 | ---- |
| 198.970 | 39.2 | ---- | -1.1 | 38.1 | ---- | 51.3 | 41.3 | -13.2 | ---- |
| 223.360 | 40.2 | ---- | -1.9 | 38.3 | ---- | 52.2 | 42.2 | -13.9 | ---- |

 Notes: 1) Place of Measurement: Measuring site of the ETC

2) Remark “----“ means that the emissions level is too low to be measured.

3) The expanded uncertainty of the radiated emission tests is 3.53 dB.

23. Operating Conditions of The EUT : Zone-6 Audio Out

Test Date : Jul. 21, 2011

| | | | | |
|---|---|--------------------------|--|--|
| Test Specification | EN 55013:2001/A1:2003/A2:2006 | | | |
| Equipment | Manufacturer | Model No. | Calibration Date | Next Cal. Date |
| LISN Asorbing Clamp EMI Test Receiver | EMCO Rohde & Schwarz Rohde & Schwarz | 3850/2 MDS-21 ESCI | 2011/05/05 2011/05/13 2011/02/02 | 2012/05/04 2012/05/12 2012/02/01 |
| Climatic Condition | Ambient Temperature: <u>26</u> °C Relative Humidity: <u>50</u> %RH | | | |
| Power Supply System | AC Power : <u>230</u> Vac <u>50</u> Hz | | | |
| Test Set-up | Table-top Equipment | | | |

| Emission Frequency (MHz) | Meter Reading (dBuV) | | CORR'd Factor (dB) | Results (dBpW/m) | | Limit (dBpW/m) | | Margins (dB) | |
|----------------------------|------------------------|------|----------------------|--------------------|------|------------------|------|----------------|------|
| | Q.P | AVG. | | Q.P | AVG. | Q.P | AVG. | Q.P | AVG. |
| 114.230 | 34.5 | ---- | -0.7 | 33.8 | ---- | 48.1 | 38.1 | -14.3 | ---- |
| 142.630 | 37.2 | ---- | -0.5 | 36.7 | ---- | 49.2 | 39.2 | -12.5 | ---- |
| 150.780 | 40.2 | ---- | -1.0 | 39.2 | ---- | 49.5 | 39.5 | -10.3 | ---- |
| 162.490 | 39.9 | ---- | -1.5 | 38.4 | ---- | 49.9 | 39.9 | -11.5 | ---- |
| 184.260 | 40.1 | ---- | -1.3 | 38.8 | ---- | 50.7 | 40.7 | -11.9 | ---- |
| 194.820 | 43.5 | 35.1 | -1.2 | 42.3 | 33.9 | 51.1 | 41.1 | -8.8 | -7.2 |

 Notes: 1) Place of Measurement: Measuring site of the ETC

2) Remark "----" means that the emissions level is too low to be measured.

3) The expanded uncertainty of the radiated emission tests is 3.53 dB.

24. Operating Conditions of The EUT : Zone-7 Audio Out

Test Date : Jul. 21, 2011

| | | | | |
|---|--|--------------------------|--|--|
| Test Specification | EN 55013:2001/A1:2003/A2:2006 | | | |
| Equipment | Manufacturer | Model No. | Calibration Date | Next Cal. Date |
| LISN Asorbing Clamp EMI Test Receiver | EMCO Rohde & Schwarz Rohde & Schwarz | 3850/2 MDS-21 ESCI | 2011/05/05 2011/05/13 2011/02/02 | 2012/05/04 2012/05/12 2012/02/01 |
| Climatic Condition | Ambient Temperature: <u>26</u> °C | | Relative Humidity: <u>50</u> %RH | |
| Power Supply System | AC Power : <u>230</u> Vac <u>50</u> Hz | | | |
| Test Set-up | Table-top Equipment | | | |

| Emission Frequency (MHz) | Meter Reading (dBuV) | | CORR'd Factor (dB) | Results (dBpW/m) | | Limit (dBpW/m) | | Margins (dB) | |
|----------------------------|------------------------|------|----------------------|--------------------|------|------------------|------|----------------|------|
| | Q.P | AVG. | | Q.P | AVG. | Q.P | AVG. | Q.P | AVG. |
| 79.540 | 34.8 | ---- | -0.4 | 34.4 | ---- | 46.8 | 36.8 | -12.4 | ---- |
| 109.520 | 36.3 | ---- | -0.6 | 35.7 | ---- | 47.9 | 37.9 | -12.2 | ---- |
| 134.220 | 37.8 | ---- | -0.5 | 37.3 | ---- | 48.9 | 38.9 | -11.6 | ---- |
| 183.610 | 40.1 | ---- | -1.3 | 38.8 | ---- | 50.7 | 40.7 | -11.9 | ---- |
| 207.240 | 40.2 | ---- | -1.4 | 38.8 | ---- | 51.6 | 41.6 | -12.8 | ---- |
| 218.360 | 43.1 | ---- | -1.8 | 41.3 | ---- | 52.0 | 42.0 | -10.7 | ---- |

 Notes: 1) Place of Measurement: Measuring site of the ETC

2) Remark “----“ means that the emissions level is too low to be measured.

3) The expanded uncertainty of the radiated emission tests is 3.53 dB.

25. Operating Conditions of The EUT : Zone-8 Audio Out

Test Date : Jul. 21, 2011

| | | | | |
|---|--|--------------------------|--|--|
| Test Specification | EN 55013:2001/A1:2003/A2:2006 | | | |
| Equipment | Manufacturer | Model No. | Calibration Date | Next Cal. Date |
| LISN Asorbing Clamp EMI Test Receiver | EMCO Rohde & Schwarz Rohde & Schwarz | 3850/2 MDS-21 ESCI | 2011/05/05 2011/05/13 2011/02/02 | 2012/05/04 2012/05/12 2012/02/01 |
| Climatic Condition | Ambient Temperature: <u>26</u> °C | | Relative Humidity: <u>50</u> %RH | |
| Power Supply System | AC Power : <u>230</u> Vac <u>50</u> Hz | | | |
| Test Set-up | Table-top Equipment | | | |

| Emission Frequency (MHz) | Meter Reading (dBuV) | | CORR'd Factor (dB) | Results (dBpW/m) | | Limit (dBpW/m) | | Margins (dB) | |
|----------------------------------|---------------------------|------|----------------------------|-----------------------|------|---------------------|------|-------------------|------|
| | Q.P | AVG. | | Q.P | AVG. | Q.P | AVG. | Q.P | AVG. |
| 63.140 | 34.0 | ---- | 0.2 | 34.2 | ---- | 46.2 | 36.2 | -12.0 | ---- |
| 109.640 | 36.9 | ---- | -0.6 | 36.3 | ---- | 47.9 | 37.9 | -11.6 | ---- |
| 138.740 | 38.2 | ---- | -0.4 | 37.8 | ---- | 49.0 | 39.0 | -11.2 | ---- |
| 163.240 | 40.1 | ---- | -1.5 | 38.6 | ---- | 49.9 | 39.9 | -11.3 | ---- |
| 197.580 | 39.8 | ---- | -1.2 | 38.6 | ---- | 51.2 | 41.2 | -12.6 | ---- |
| 206.340 | 42.6 | ---- | -1.4 | 41.2 | ---- | 51.5 | 41.5 | -10.3 | ---- |

 Notes: 1) Place of Measurement: Measuring site of the ETC

2) Remark “----“ means that the emissions level is too low to be measured.

3) The expanded uncertainty of the radiated emission tests is 3.53 dB.

26. Operating Conditions of The EUT : RS232

Test Date : Jul. 21, 2011

| | | | | |
|---|---|--------------------------|--|--|
| Test Specification | EN 55013:2001/A1:2003/A2:2006 | | | |
| Equipment | Manufacturer | Model No. | Calibration Date | Next Cal. Date |
| LISN Asorbing Clamp EMI Test Receiver | EMCO Rohde & Schwarz Rohde & Schwarz | 3850/2 MDS-21 ESCI | 2011/05/05 2011/05/13 2011/02/02 | 2012/05/04 2012/05/12 2012/02/01 |
| Climatic Condition | Ambient Temperature: <u>26</u> °C Relative Humidity: <u>50</u> %RH | | | |
| Power Supply System | AC Power : <u>230</u> Vac <u>50</u> Hz | | | |
| Test Set-up | Table-top Equipment | | | |

| Emission Frequency (MHz) | Meter Reading (dBuV) | | CORR'd Factor (dB) | Results (dBpW/m) | | Limit (dBpW/m) | | Margins (dB) | |
|----------------------------|------------------------|------|----------------------|--------------------|------|------------------|------|----------------|------|
| | Q.P | AVG. | | Q.P | AVG. | Q.P | AVG. | Q.P | AVG. |
| 75.320 | 38.4 | 27.3 | -0.1 | 38.3 | 27.2 | 46.7 | 36.7 | -8.4 | -9.5 |
| 101.520 | 37.2 | ---- | -0.5 | 36.7 | ---- | 47.6 | 37.6 | -10.9 | ---- |
| 132.270 | 40.1 | 38.1 | -0.5 | 39.6 | 37.6 | 48.8 | 38.8 | -9.2 | -1.2 |
| 184.630 | 41.6 | ---- | -1.3 | 40.3 | ---- | 50.7 | 40.7 | -10.4 | ---- |
| 193.570 | 43.6 | 35.0 | -1.2 | 42.4 | 33.8 | 51.1 | 41.1 | -8.7 | -7.3 |
| 206.850 | 42.5 | ---- | -1.4 | 41.1 | ---- | 51.6 | 41.6 | -10.5 | ---- |

 Notes: 1) Place of Measurement: Measuring site of the ETC

2) Remark “----“ means that the emissions level is too low to be measured.

3) The expanded uncertainty of the radiated emission tests is 3.53 dB.

4.1.2.2 Radiated Emissions (Absorbing Clamp) Test Setup Photos :



4.1.3 Harmonics Current Emissions Test

4.1.3.1 Harmonics Current Emissions Test Data

Operating Conditions of The EUT : AUX In

Test Date : Jul. 21, 2011

| | | | | |
|---------------------|--|----------------|----------------------------------|----------------|
| Test Specification | EN 61000-3-2:2006/A1:2009/A2:2009 | | | |
| Equipment | Manufacturer | Model No. | Calibration Date | Next Cal. Date |
| Harmonics-1000 | EMC-Partner | Harmonics-1000 | 2010/12/17 | 2011/12/16 |
| Climatic Condition | Ambient Temperature: <u>26</u> °C | | Relative Humidity: <u>50</u> %RH | |
| Power Supply System | AC Power : <u>230</u> Vac <u>50</u> Hz | | | |
| Test Set-up | Table-top Equipment | | | |

Test data see the next pages.



Operator : Urms = 229.9V Freq = 49.987 Range: 1 A
 Unit : Irms = 0.207A Ipk = 0.733A cf = 3.551
 Serialnumber : P = 16.57W S = 47.49VA pf = 0.349
 Remarks : THDi = 85.40% THDu = 0.10% Class A
 Test - Time : 3min -100%

Test completed, Result: PASSED

| Order | Freq. [Hz] | Iavg [A] | I _{max} [A] | Limit [A] | Order | Freq. [Hz] | Iavg [A] | I _{max} [A] | Limit [A] |
|-------|---------------|-------------|-------------------------|--------------|-------|---------------|-------------|-------------------------|--------------|
| 1 | 50 | 0.1031 | 0.1043 | | 21 | 1050 | 0 | 0.0031 | 0.1071 |
| 2 | 100 | 0.0751 | 0.0757 | 1.08 | 22 | 1100 | 0 | 0.0004 | 0.0836 |
| 3 | 150 | 0.0878 | 0.0884 | 2.3 | 23 | 1150 | 0 | 0.0025 | 0.0978 |
| 4 | 200 | 0.0613 | 0.0618 | 0.43 | 24 | 1200 | 0 | 0.0003 | 0.0767 |
| 5 | 250 | 0.0707 | 0.0712 | 1.14 | 25 | 1250 | 0 | 0.0017 | 0.09 |
| 6 | 300 | 0.0397 | 0.04 | 0.3 | 26 | 1300 | 0 | 0 | 0.0708 |
| 7 | 350 | 0.0529 | 0.0532 | 0.77 | 27 | 1350 | 0 | 0.0005 | 0.0833 |
| 8 | 400 | 0.0243 | 0.0245 | 0.23 | 28 | 1400 | 0 | 0.0001 | 0.0657 |
| 9 | 450 | 0.0329 | 0.0331 | 0.4 | 29 | 1450 | 0 | 0.0004 | 0.0776 |
| 10 | 500 | 0.0115 | 0.0116 | 0.184 | 30 | 1500 | 0 | 0.0001 | 0.0613 |
| 11 | 550 | 0.0236 | 0.0237 | 0.33 | 31 | 1550 | 0 | 0.0008 | 0.0726 |
| 12 | 600 | 0 | 0.0049 | 0.1533 | 32 | 1600 | 0 | 0.0001 | 0.0575 |
| 13 | 650 | 0.0114 | 0.0115 | 0.21 | 33 | 1650 | 0 | 0.0007 | 0.0682 |
| 14 | 700 | 0 | 0.0017 | 0.1314 | 34 | 1700 | 0 | 0.0001 | 0.0541 |
| 15 | 750 | 0.0054 | 0.0054 | 0.15 | 35 | 1750 | 0 | 0.0005 | 0.0643 |
| 16 | 800 | 0 | 0.0004 | 0.115 | 36 | 1800 | 0 | 0 | 0.0511 |
| 17 | 850 | 0 | 0.0007 | 0.1324 | 37 | 1850 | 0 | 0.0002 | 0.0608 |
| 18 | 900 | 0 | 0.0006 | 0.1022 | 38 | 1900 | 0 | 0.0001 | 0.0484 |
| 19 | 950 | 0 | 0.0025 | 0.1184 | 39 | 1950 | 0 | 0.0002 | 0.0577 |
| 20 | 1000 | 0 | 0.0002 | 0.092 | 40 | 2000 | 0 | 0 | 0.046 |

4.1.3.2 Harmonics Current Emissions Test Setup Photos



4.1.4 Voltage Fluctuations and Flicker Test
4.1.4.1 Voltage Fluctuations and Flicker Test Data

 Operating Conditions of The EUT : AUX In

Test Date : Jul. 21, 2011

| | | | | |
|---------------------|--|----------------|----------------------------------|----------------|
| Test Specification | EN 61000-3-3:2008 | | | |
| Equipment | Manufacturer | Model No. | Calibration Date | Next Cal. Date |
| Hormonics-1000 | EMC-Partner | Hormonics-1000 | 2010/12/17 | 2011/12/16 |
| Climatic Condition | Ambient Temperature: <u>26</u> °C | | Relative Humidity: <u>50</u> %RH | |
| Power Supply System | AC Power : <u>230</u> Vac <u>50</u> Hz | | | |
| Test Set-up | Table-top Equipment | | | |

| | Test Data | Limit | Pass or Fail |
|-------------|-----------|--------|--------------|
| Plt | 0.07 | 0.65 | Pass |
| Pst | 0.07 | 1.00 | Pass |
| dt | 0.00 ms | 500 ms | Pass |
| dmax | 0.00 % | 4.0 % | Pass |
| dc | 0.01 % | 3.3 % | Pass |

4.1.4.2 Voltage Fluctuations and Flicker Test Setup Photos

CONSTRUCTION PHOTOS OF EUT

1. Front View of EUT



2. Side View of EUT



CONSTRUCTION PHOTOS OF EUT

3. Rear View of EUT



4. Side View of EUT



CONSTRUCTION PHOTOS OF EUT

5. Top View of EUT



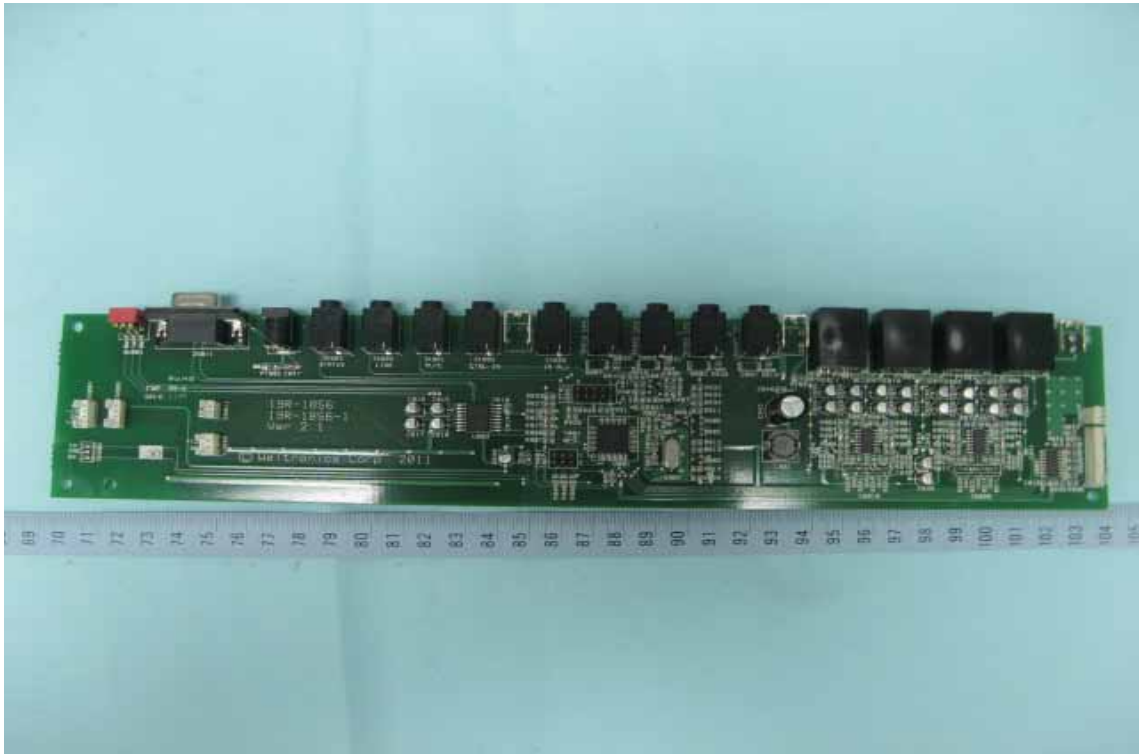
CONSTRUCTION PHOTOS OF EUT

6. Internal View of EUT



CONSTRUCTION PHOTOS OF EUT

7. Component View of PCB

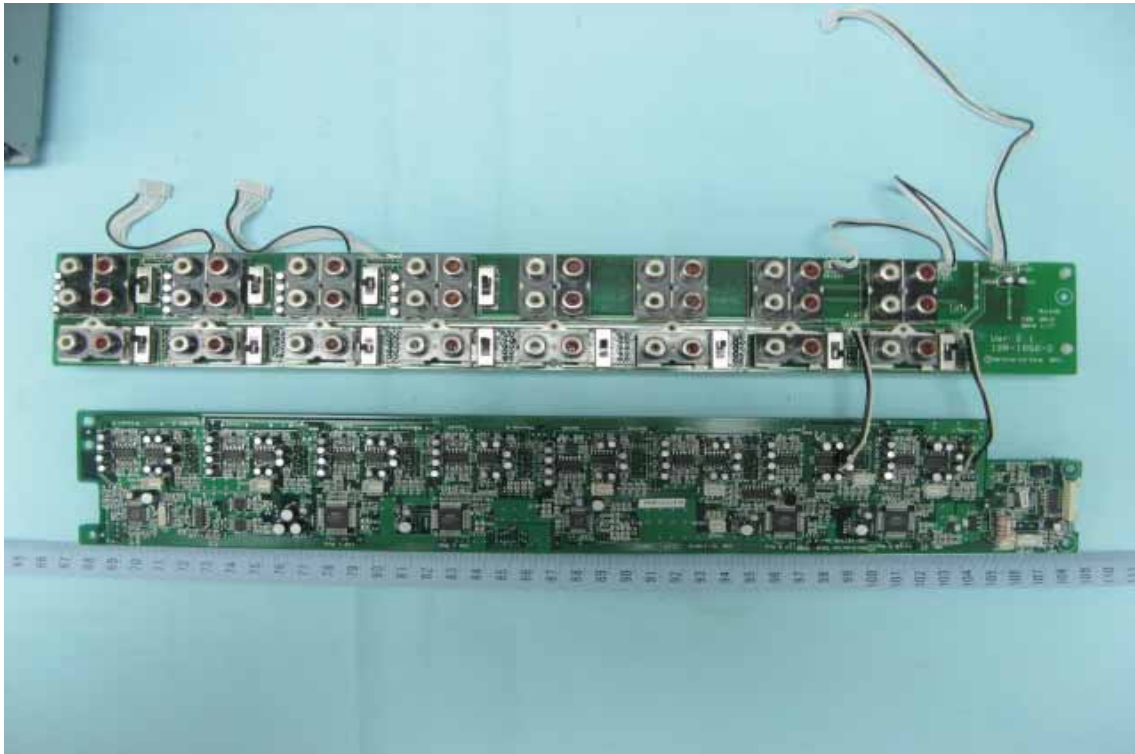


8. Solder View of PCB

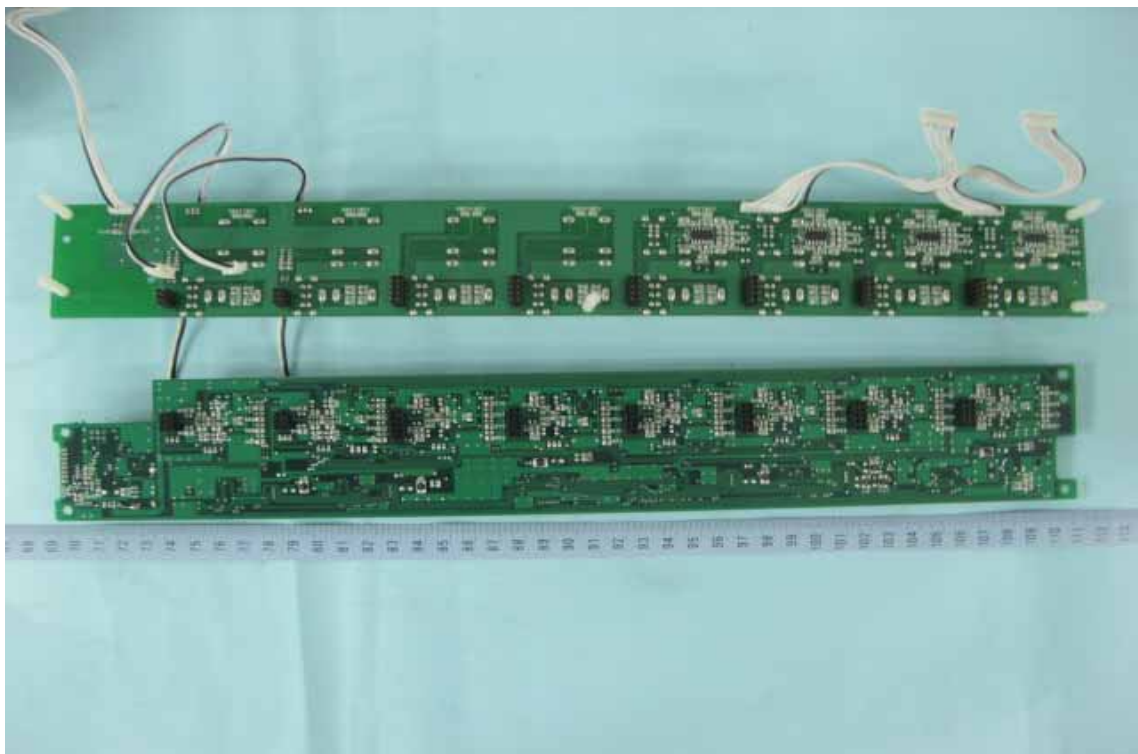


CONSTRUCTION PHOTOS OF EUT

9. Component View of PCB

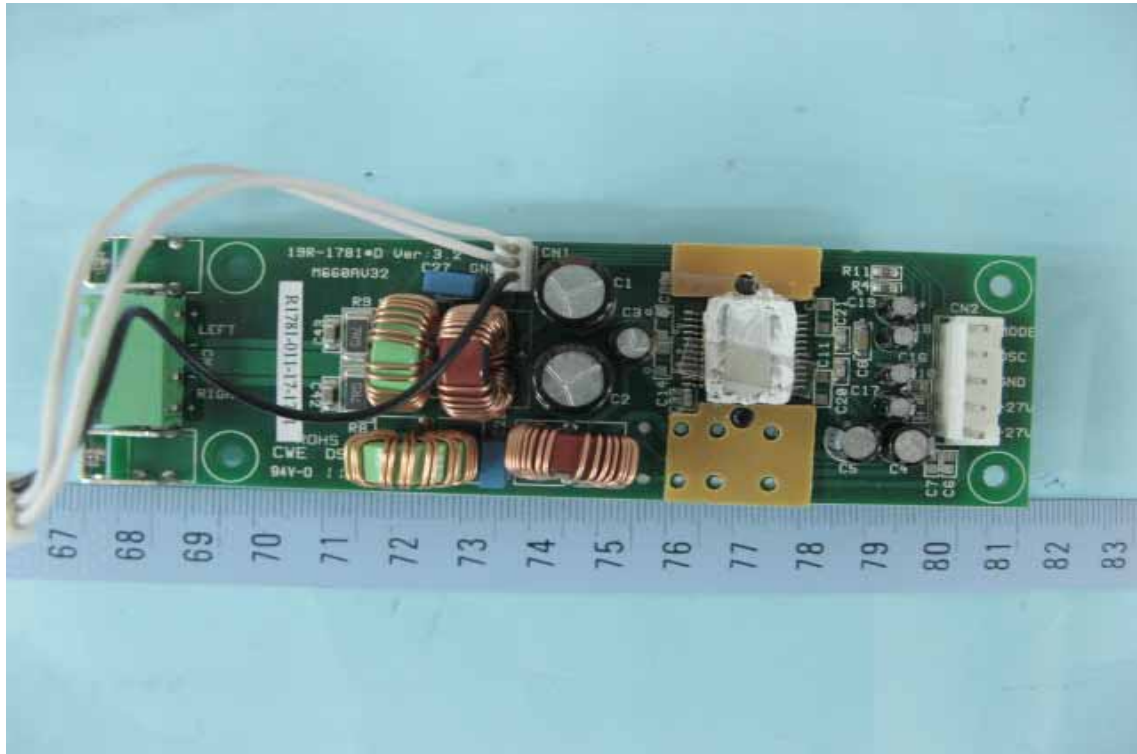


10. Solder View of PCB

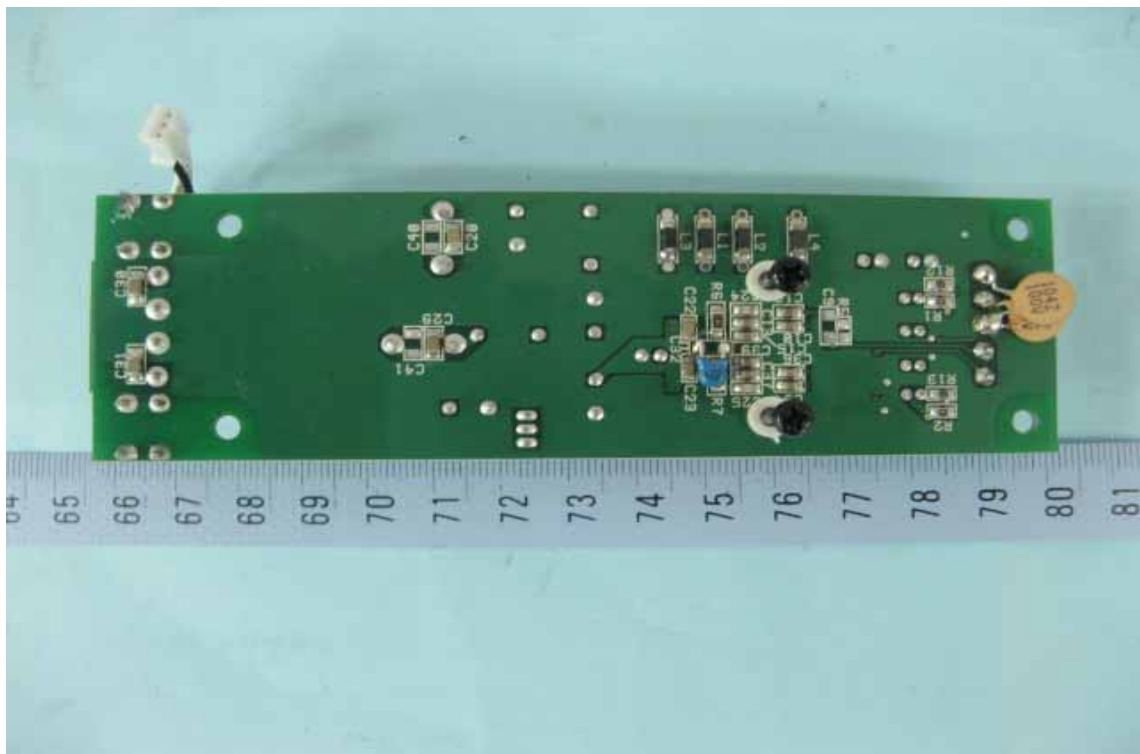


CONSTRUCTION PHOTOS OF EUT

11. Component View of PCB



12. Solder View of PCB

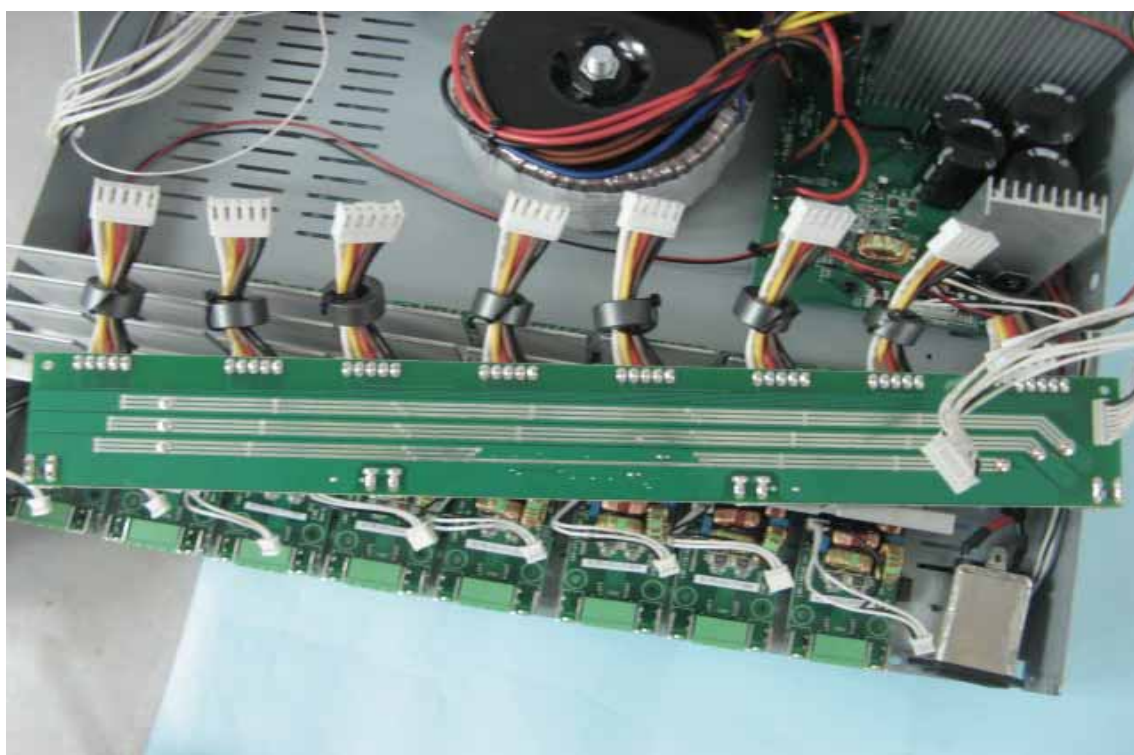


CONSTRUCTION PHOTOS OF EUT

13. Component View of PCB

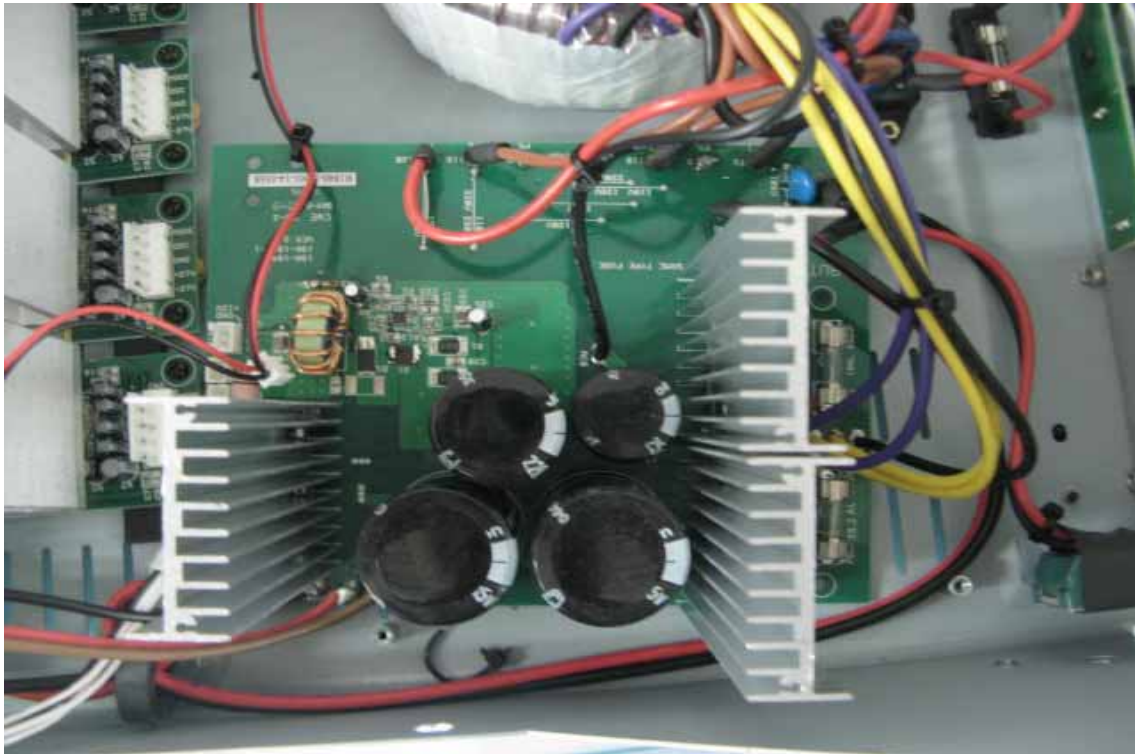


14. Solder View of PCB



CONSTRUCTION PHOTOS OF EUT

15. Component View of PCB



16. Solder View of PCB

