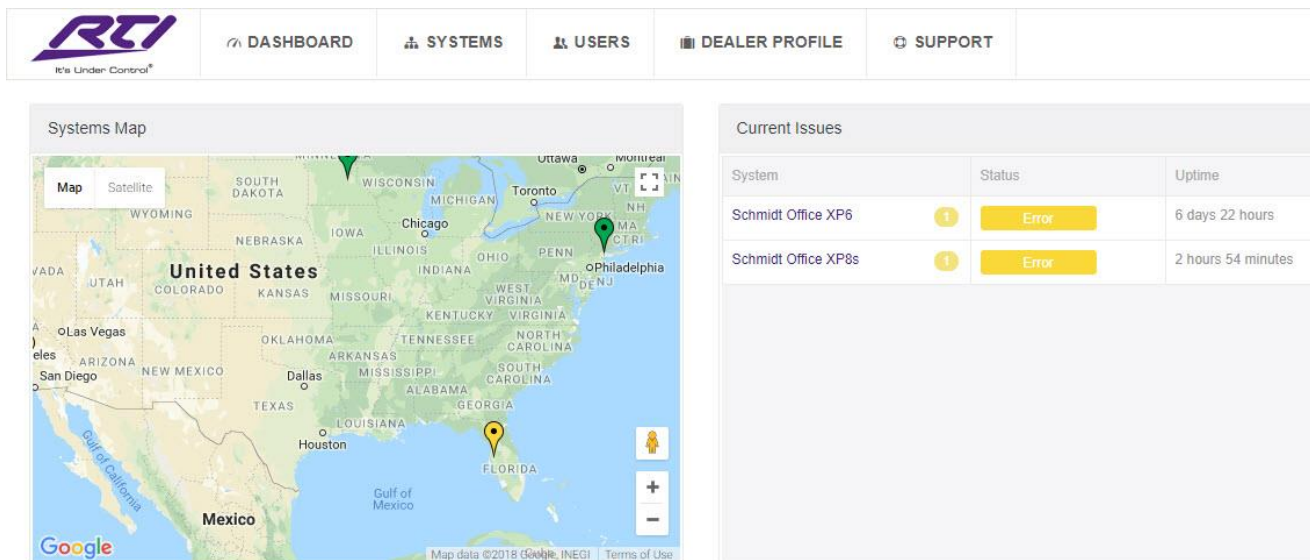


## New Feature List in APEX 10.4

### RTIQ INTELLIGENT MONITORING PLATFORM

RTI dealers can now intelligently monitor their clients' systems and receive alerts via email and text messages when a problem occurs. They can easily monitor drivers, RTI devices, and system variable statuses, and heal the system by remotely rebooting the control processor (no PDU required) and triggering custom actions. RTiQ also includes a free DDNS account which can be used for remote access. Now dealers can have peace of mind and find out about problems before a client does.



The screenshot shows the RTI APEX 10.4 dashboard. At the top, there is a navigation bar with the RTI logo and several menu items: DASHBOARD, SYSTEMS, USERS, DEALER PROFILE, and SUPPORT. Below the navigation bar, the main content area is divided into two sections. On the left is a 'Systems Map' which is a Google Map of the United States with several location pins. On the right is a 'Current Issues' table.

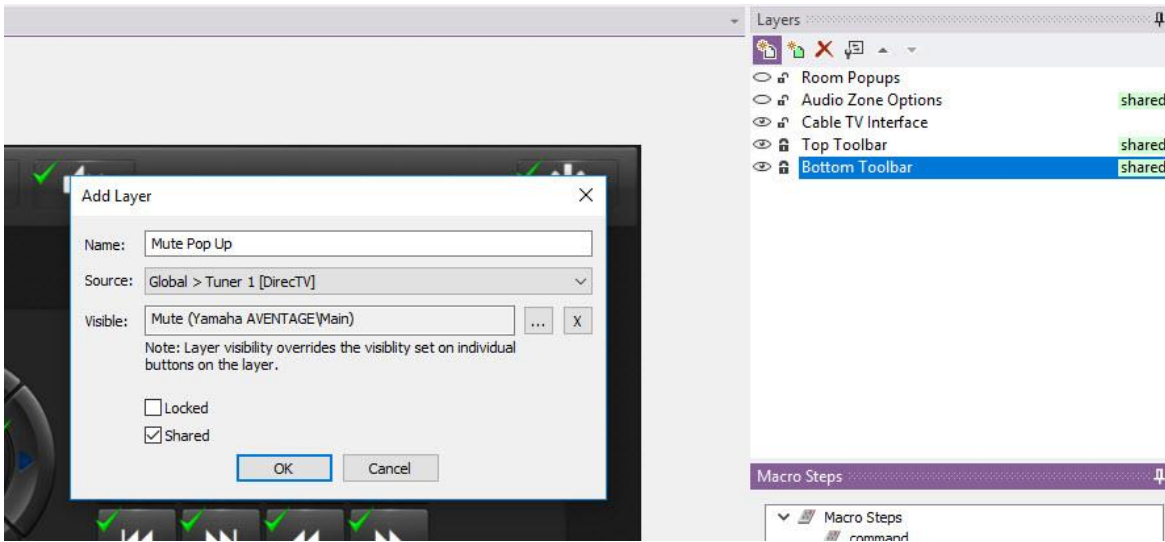
System	Status	Uptime
Schmidt Office XP6	Error	6 days 22 hours
Schmidt Office XP8s	Error	2 hours 54 minutes

### LAYERS

A popular request from RTI dealers for years, layers are here! Layers allow you to manage complex layouts with ease, by allowing you to isolate changes to specific parts of the page. For example, you can edit popups, lists, headers, and footers separately, without affecting other portions of the page.

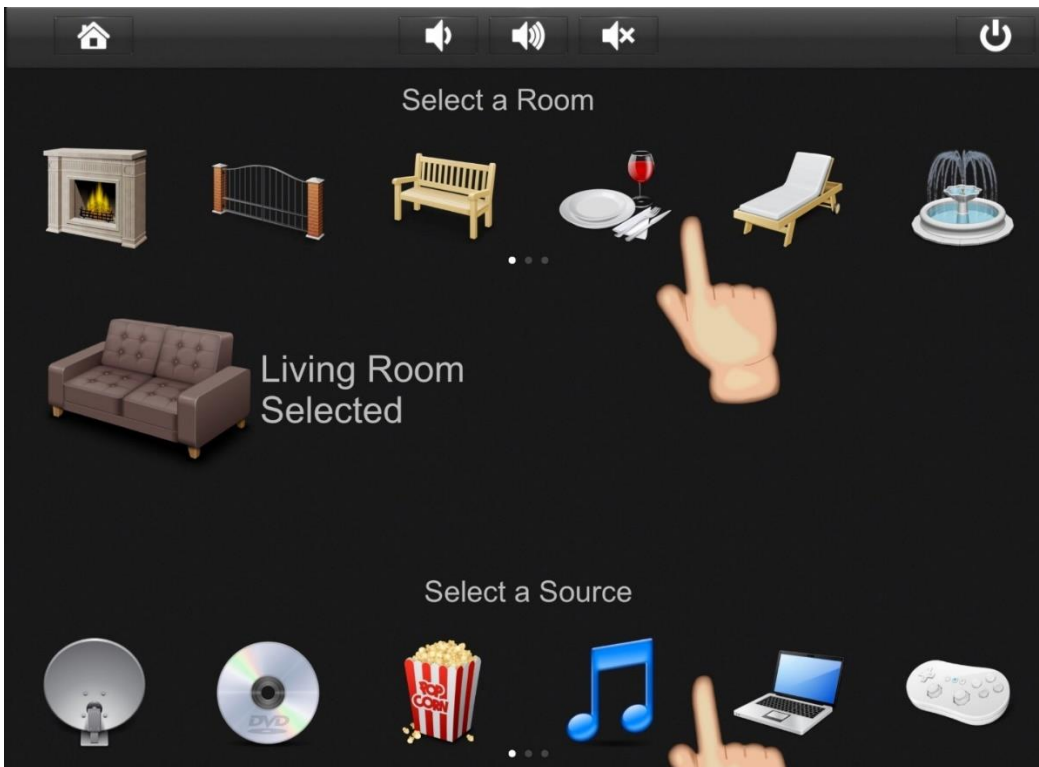
### SHARED LAYERS

Shared layers allow you design portions of a page, like popups and toolbars, once and then use them on multiple pages. Any edits you make to the shared layer are automatically reflected on every page that includes them.



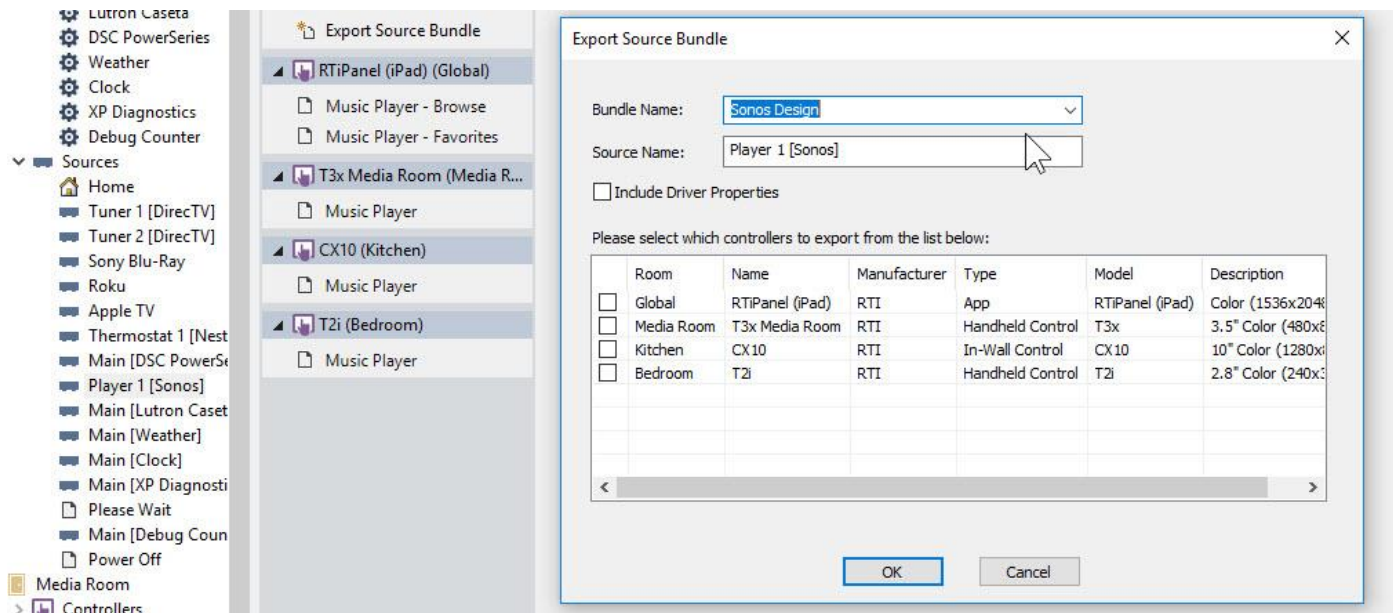
## VIEWPORTS

Viewports give RTIPanel devices the ability to host a horizontal scrolling list. You can swipe through this list without impacting any other graphics on the page. Viewports are a powerful feature that adds versatility to any RTIPanel device.



### EXPORTING AND IMPORTING BUNDLES

Once an interface is fully developed and perfected by the programmer, that device can be exported to a Bundle which includes all programming for that device, including the screens, IR codes, macros, and drivers. The Bundle can then be imported into the same or future projects. Bundles allow you to build a device library that contains a graphical user interface with functionality that you can repeatedly use in all your projects.



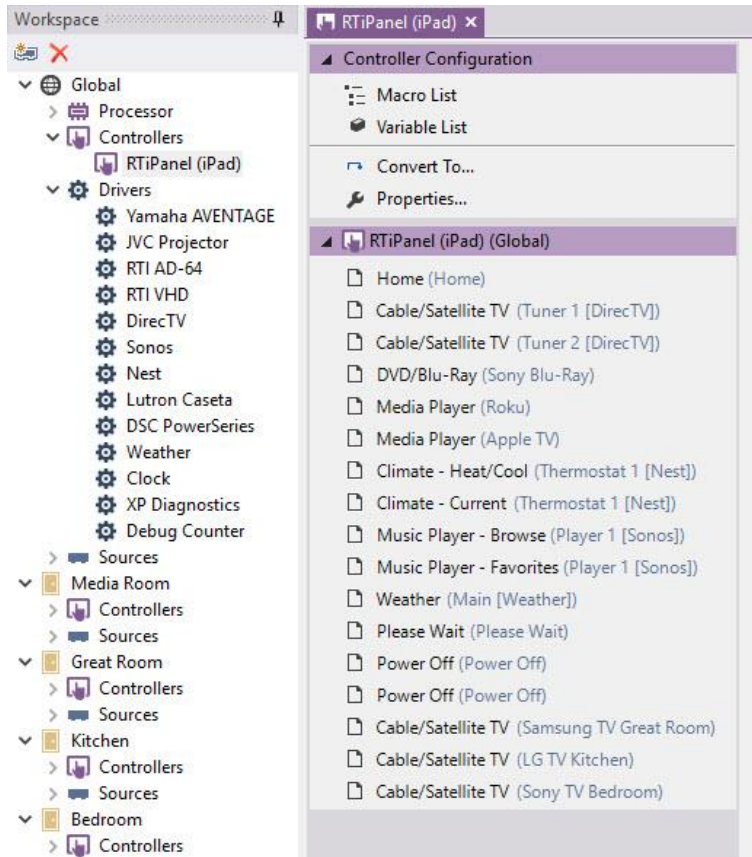
### SUPPORT FOR RTI MIRAVUE VIP-1

The RTI Miravue VIP-1 1080p video over IP transceiver configures as a transmitter, receiver or both. It can also be used as an expansion device which can route IR or RS-232 commands from the processor over the network. The RTI VIP-1 does not require an enterprise-grade switch, reducing the cost of installation. Packed with many other features, this is a powerful option to use in installations.



### IMPROVED PAGE MANAGEMENT

Simply click on any controller, and all pages display in a single list allowing you to access and modify any page on your device from one place.



### NEW MACRO COMMAND FEATURES

To accelerate the programming process for devices using IR codes, you can now set a default value for the minimum repeats, repeat while the button is pressed, and the .3 second delay setting for all IR codes in a device.

